



NOTES:

- 1 SEE HVAC DUCTWORK ATTIC PLAN, H-20 FOR CONTINUATION
- 2 GRD FED FROM DUCT ON ATTIC FLOOR ABOVE. SEE ATTIC PLAN DRAWING H-200 FOR CONTINUATION.
- 3 DUCT IN ATTIC SPACE.
- 4 32x16 SUPPLY DUCT DOWN FROM RTU. SEE HVAC ROOF PLAN, H-300 FOR CONTINUATION.
- 5 32x16 RETURN DUCT UP TO RTU. SEE HVAC ROOF PLAN, H-300 FOR CONTINUATION.
- 6 18x14 RETURN DUCT, SEE HVAC ROOF PLAN, H-300 FOR CONTINUATION.
- 7 28x12 SUPPLY DUCT FROM KITCHEN HOOD, BY FOOD SERVICE EQUIPMENT CONTRACTOR, UP TO ATTIC. REFER TO HVAC DUCTWORK ATTIC PLAN, H-200, FOR CONTINUATION.
- 8 14x10 EXHAUST DUCT FROM KITCHEN HOOD, BY FOOD SERVICE EQUIPMENT CONTRACTOR, UP TO ATTIC. REFER TO HVAC DUCTWORK ATTIC PLAN, H-200, FOR CONTINUATION.
- 9 PROVIDE DUCT TRANSITION AS REQUIRED TO CONNECT TO EXISTING DUCT.
- 10 EXISTING EXHAUST PAN AND DUCTWORK TO REMAIN
- 11 EXISTING ELECTRIC WALL HEATER TO REMAIN
- 12 PROVIDE 16x4 EXHAUST AIR DUCT CONNECTION TO DISHWASHER HOOD. REFER TO HVAC DUCTWORK ATTIC PLAN, H-200 FOR CONTINUATION.
- 13 RETURN DUCT FROM LOW RETURN UP TO ATTIC. SEE HVAC DUCTWORK ATTIC PLAN, H-200 FOR CONTINUATION.
- 14 LOCATE FAN COIL UNIT SO THAT IT FALLS BETWEEN EXISTING JOISTS.
- 15 DUCTWORK RUNS EXPOSED IN SPACE.
- 16 DUCTWORK SHALL RUN BETWEEN EXISTING ROOF FRAMING.
- 17 INSTALL CABINET HEATER RECESSED IN BULKHEAD
- 18 PROVIDE DUCT OFFSET TO TRANSITION BETWEEN ATTIC SPACE AND MECHANICAL ROOM.
- 19 PROVIDE DUCT OFFSET TO TRANSITION BETWEEN MECHANICAL ROOM AND JUST BELOW CEILING IN ADJACENT SPACE.
- 20 PROVIDE DUCT PRESSURE SENSOR PER MANUFACTURER'S RECOMMENDATIONS FOR CONTROL VAV SYSTEM.

CONTRACTOR

ABBREVIATIONS:

AC	GAS FURNACE WITH SPLIT SYSTEM AC
AFF	ABOVE FINISHED FLOOR
AFR	ABOVE FINISHED ROOF
BOD	BOTTOM OF DUCT
CD	CEILING DIFFUSER
CFM	CUBIC FEET PER MINUTE
COD	CABLE OPERATED DAMPER
CU	CONDENSING UNITS
EA	EXHAUST AIR
EAD	EXHAUST AIR DUCT
EF	EXHAUST FAN
FC	MINI SPLIT SYSTEM HEAT PUMP
FCL	FALSE CEILING LEVEL
FD	FIRE DAMPER
FFL	FINISH FLOOR LEVEL
FLEX	FLEXIBLE DUCT
FEB	FLAT ON BOTTOM
FOT	FLAT ON TOP
FSD	FIRE SMOKE DAMPER
KED	KITCHEN EXHAUST DUCT
KMD	KITCHEN MAKE-UP AIR DUCT
MAU	MAKE-UP AIR UNIT / VENTILATION UNIT
OA	OUTSIDE AIR
OED	OPEN END DUCT
RA	RETURN AIR
RAD	RETURN AIR DUCT
RTU	ROOF TOP AIR CONDITIONING UNIT
SA	SUPPLY AIR
SAD	SUPPLY AIR DUCT
T	THERMOSTAT
TG	TRANSFER GRILLE
TOD	TOP OF DUCT
VAV	VARIABLE AIR VALVE
VD	VOLUME DAMPER

NOTE: THIS DRAWING IS PROVIDED AS REFERENCE FOR COORDINATION ONLY. IT IS NOT INTENDED TO REPLACE DESIGN, FABRICATION, OR SHOP DRAWINGS OR TO RELIEVE CONTRACTOR OF COORDINATION RESPONSIBILITY.

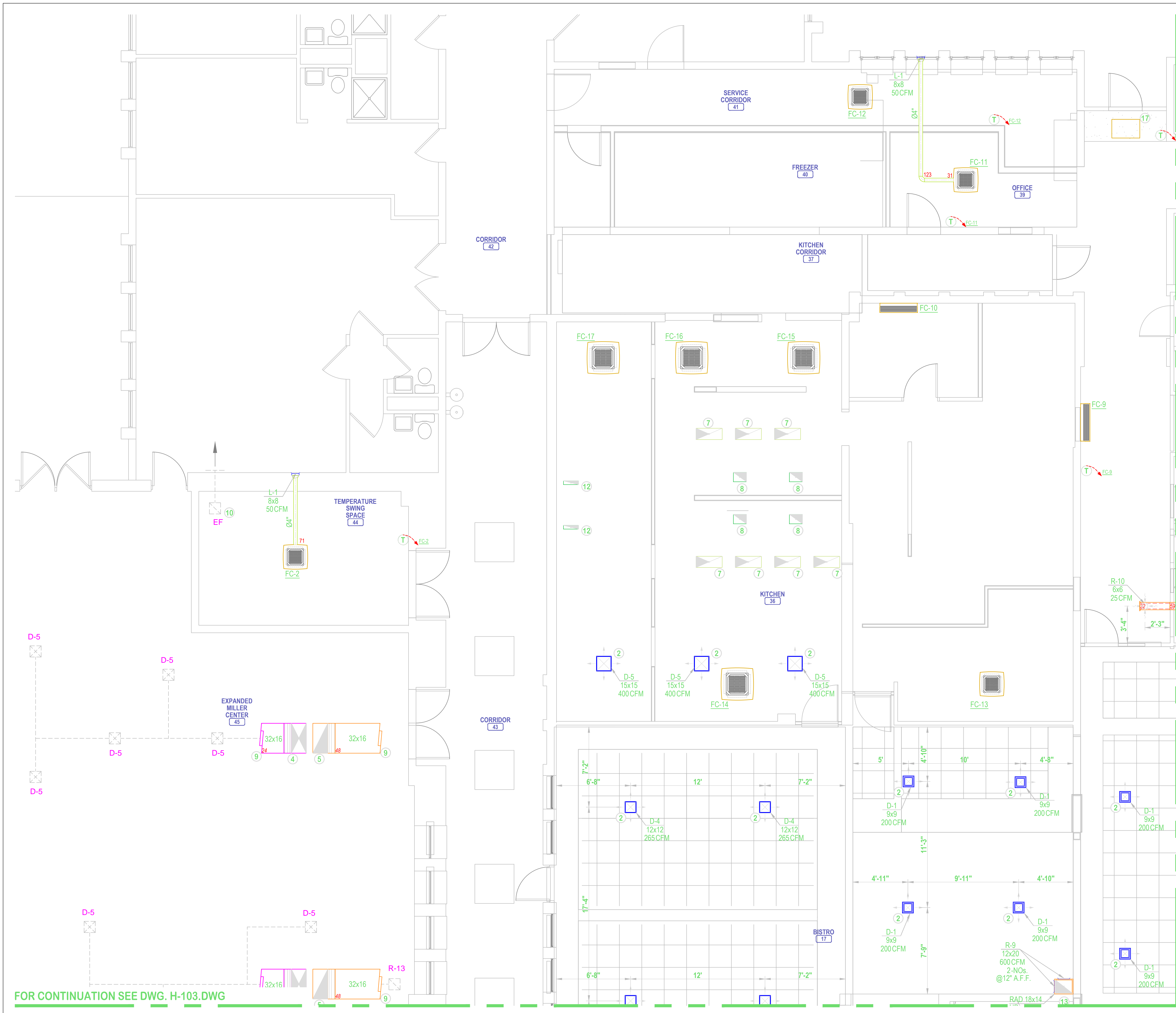
ADDRESS
RENOVATIONS & ADDITIONS

REV	DESCRIPTION	DATE
A	ISSUED FOR REVIEW & COMMENT	05/09/2019

Drawn:	RA
Checked:	BC
Date:	05/09/2019
Scale:	1/4"=1'-0"

HVAC DUCTWORK PLAN - GENERAL

SHEET TITLE
H-100
SHEET NO.



- NOTES:**
- SEE HVAC DUCTWORK ATTIC PLAN, H-20 FOR CONTINUATION
 - GRD FED FROM DUCT ON ATTIC FLOOR ABOVE. SEE ATTIC PLAN DRAWING H-200 FOR CONTINUATION.
 - DUCT IN ATTIC SPACE.
 - 32x16 SUPPLY DUCT DOWN FROM RTU. SEE HVAC ROOF PLAN, H-300 FOR CONTINUATION.
 - 32x16 RETURN DUCT UP TO RTU. SEE HVAC ROOF PLAN, H-300 FOR CONTINUATION.
 - 18x14 RETURN DUCT, SEE HVAC ROOF PLAN, H-300 FOR CONTINUATION.
 - 28x12 SUPPLY DUCT FROM KITCHEN HOOD, BY FOOD SERVICE EQUIPMENT CONTRACTOR, UP TO ATTIC. REFER TO HVAC DUCTWORK ATTIC PLAN, H-200, FOR CONTINUATION.
 - 14x10 EXHAUST DUCT FROM KITCHEN HOOD, BY FOOD SERVICE EQUIPMENT CONTRACTOR, UP TO ATTIC. REFER TO HVAC DUCTWORK ATTIC PLAN, H-200, FOR CONTINUATION.
 - PROVIDE DUCT TRANSITION AS REQUIRED TO CONNECT TO EXISTING DUCT.
 - EXISTING EXHAUST PAN AND DUCTWORK TO REMAIN
 - EXISTING ELECTRIC WALL HEATER TO REMAIN
 - PROVIDE 16x4 EXHAUST AIR DUCT CONNECTION TO DISHWASHER HOOD. REFER TO HVAC DUCTWORK ATTIC PLAN, H-200 FOR CONTINUATION.
 - RETURN DUCT FROM LOW RETURN UP TO ATTIC. SEE HVAC DUCTWORK ATTIC PLAN, H-200 FOR CONTINUATION.
 - LOCATE FAN COIL UNIT SO THAT IT FALLS BETWEEN EXISTING JOISTS.
 - DUCTWORK RUNS EXPOSED IN SPACE.
 - DUCTWORK SHALL RUN BETWEEN EXISTING ROOF FRAMING.
 - INSTALL CABINET HEATER RECESSED IN BULKHEAD
 - PROVIDE DUCT OFFSET TO TRANSITION BETWEEN ATTIC SPACE AND MECHANICAL ROOM.
 - PROVIDE DUCT OFFSET TO TRANSITION BETWEEN MECHANICAL ROOM AND JUST BELOW CEILING IN ADJACENT SPACE.
 - PROVIDE DUCT PRESSURE SENSOR PER MANUFACTURER'S RECOMMENDATIONS FOR CONTROL VAV SYSTEM.

CONTRACTOR

ABBREVIATIONS:

AC	GAS FURNACE WITH SPLIT SYSTEM AC
AFF	ABOVE FINISHED FLOOR
AFR	ABOVE FINISHED ROOF
BOD	BOTTOM OF DUCT
CD	CEILING DIFFUSER
CFM	CUBIC FEET PER MINUTE
COD	CABLE OPERATED DAMPER
CU	CONDENSING UNITS
EA	EXHAUST AIR
EAD	EXHAUST AIR DUCT
EF	EXHAUST FAN
FC	MINI SPLIT SYSTEM HEAT PUMP
FCL	FALSE CEILING LEVEL
FD	FIRE DAMPER
FFL	FINISH FLOOR LEVEL
FLEX	FLEXIBLE DUCT
FOB	FLAT ON BOTTOM
FOT	FLAT ON TOP
FSD	FIRE SMOKE DAMPER
KED	KITCHEN EXHAUST DUCT
KMD	KITCHEN MAKE-UP AIR DUCT
MAU	MAKE-UP AIR UNIT / VENTILATION UNIT
OA	OUTSIDE AIR
OED	OPEN END DUCT
RA	RETURN AIR
RAD	RETURN AIR DUCT
RTU	ROOF TOP AIR CONDITIONING UNIT
SA	SUPPLY AIR
SAD	SUPPLY AIR DUCT
T	THERMOSTAT
TG	TRANSFER GRILLE
TOD	TOP OF DUCT
VAV	VARIABLE AIR VALVE
VD	VOLUME DAMPER

NOTE: THIS DRAWING IS PROVIDED AS REFERENCE FOR COORDINATION ONLY. IT IS NOT INTENDED TO REPLACE DESIGN, FABRICATION, OR SHOP DRAWINGS OR TO RELIEVE CONTRACTOR OF COORDINATION RESPONSIBILITY.

ADDRESS
RENOVATIONS
&
ADDITIONS

REV	DESCRIPTION	DATE
A	ISSUED FOR REVIEW & COMMENT	05/09/2019

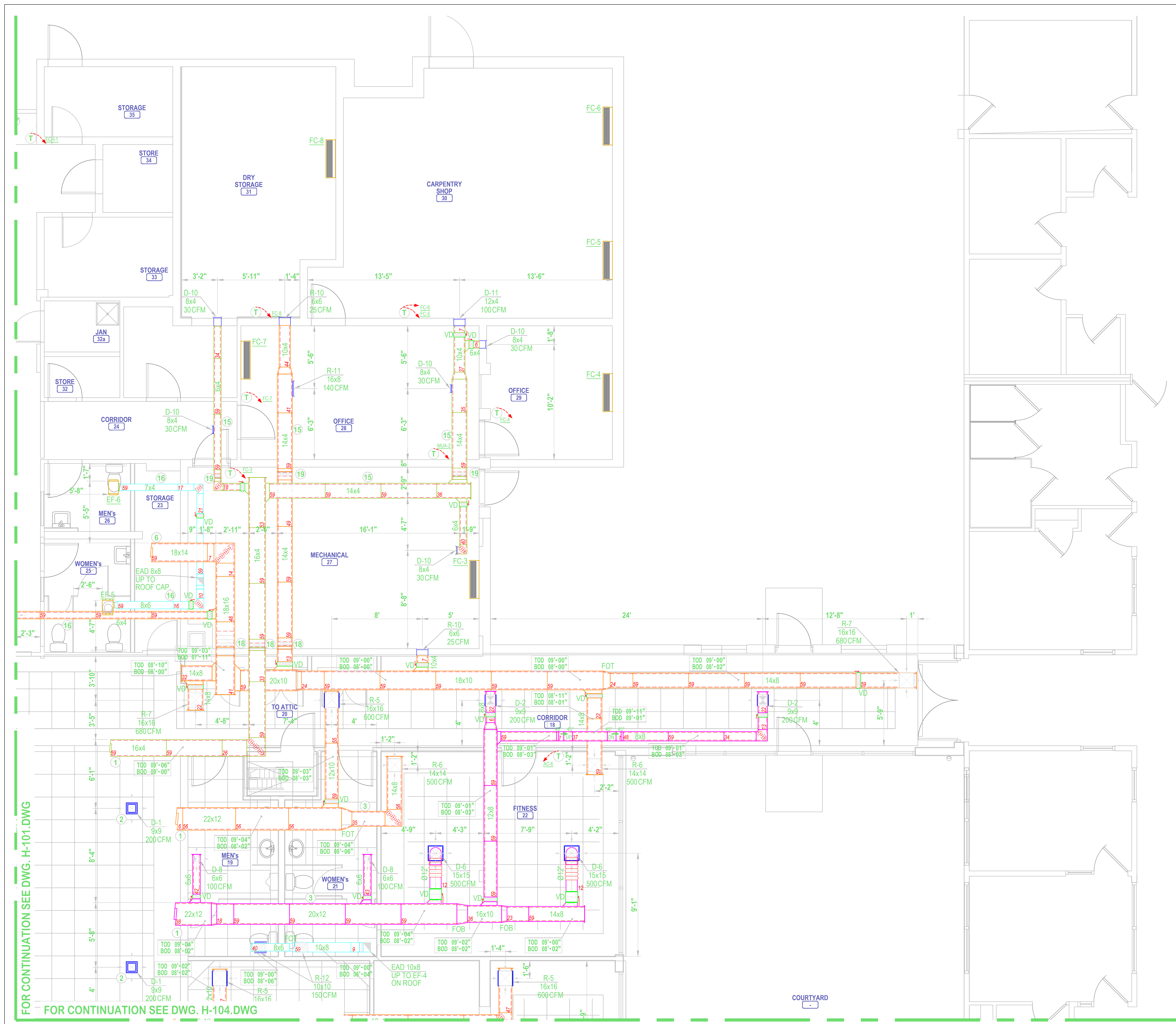
Drawn:	RA
Checked:	BC
Date:	05/09/2019
Scale:	1/4"=1'-0"

HVAC DUCTWORK
PLAN - PART A

SHEET TITLE

H-101

SHEET NO.



- NOTES:**
- ① SEE HVAC DUCTWORK ATTIC PLAN, H-20 FOR CONTINUATION.
 - ② GRD FED FROM DUCT ON ATTIC FLOOR ABOVE. SEE ATTIC PLAN DRAWING H-200 FOR CONTINUATION.
 - ③ DUCT IN ATTIC SPACE.
 - ④ 32x16 SUPPLY DUCT DOWN FROM RTU. SEE HVAC ROOF PLAN, H-300 FOR CONTINUATION.
 - ⑤ 32x16 RETURN DUCT UP TO RTU. SEE HVAC ROOF PLAN, H-300 FOR CONTINUATION.
 - ⑥ 18x14 RETURN DUCT, SEE HVAC ROOF PLAN, H-300 FOR CONTINUATION.
 - ⑦ 28x12 SUPPLY DUCT FROM KITCHEN HOOD, BY FOOD SERVICE EQUIPMENT CONTRACTOR, UP TO ATTIC. REFER TO HVAC DUCTWORK ATTIC PLAN, H-200, FOR CONTINUATION.
 - ⑧ 14x10 EXHAUST DUCT FROM KITCHEN HOOD, BY FOOD SERVICE EQUIPMENT CONTRACTOR, UP TO ATTIC. REFER TO HVAC DUCTWORK ATTIC PLAN, H-200, FOR CONTINUATION.
 - ⑨ PROVIDE DUCT TRANSITION AS REQUIRED TO CONNECT TO EXISTING DUCT.
 - ⑩ EXISTING EXHAUST PAN AND DUCTWORK TO REMAIN
 - ⑪ EXISTING ELECTRIC WALL HEATER TO REMAIN
 - ⑫ PROVIDE 16x4 EXHAUST AIR DUCT CONNECTION TO DISHWASHER HOOD. REFER TO HVAC DUCTWORK ATTIC PLAN, H-200 FOR CONTINUATION.
 - ⑬ RETURN DUCT FROM LOW RETURN UP TO ATTIC. SEE HVAC DUCTWORK ATTIC PLAN, H-200 FOR CONTINUATION.
 - ⑭ LOCATE FAN COIL UNIT SO THAT IT FALLS BETWEEN EXISTING JOISTS.
 - ⑮ DUCTWORK RUNS EXPOSED IN SPACE.
 - ⑯ DUCTWORK SHALL RUN BETWEEN EXISTING ROOF FRAMING.
 - ⑰ INSTALL CABINET HEATER RECESSED IN BULKHEAD
 - ⑱ PROVIDE DUCT OFFSET TO TRANSITION BETWEEN ATTIC SPACE AND MECHANICAL ROOM.
 - ⑲ PROVIDE DUCT OFFSET TO TRANSITION BETWEEN MECHANICAL ROOM AND JUST BELOW CEILING IN ADJACENT SPACE.
 - ⑳ PROVIDE DUCT PRESSURE SENSOR PER MANUFACTURER'S RECOMMENDATIONS FOR CONTROL VAV SYSTEM.

CONTRACTOR

ABBREVIATIONS:

AC	GAS FURNACE WITH SPLIT SYSTEM AC
AFF	ABOVE FINISHED FLOOR
AFR	ABOVE FINISHED ROOF
BOD	BOTTOM OF DUCT
CD	CEILING DIFFUSER
CFM	CUBIC FEET PER MINUTE
COD	CABLE OPERATED DAMPER
CU	CONDENSING UNITS
EA	EXHAUST AIR
EAD	EXHAUST AIR DUCT
EF	EXHAUST FAN
FC	MINI SPLIT SYSTEM HEAT PUMP
FCL	FALSE CEILING LEVEL
FD	FIRE DAMPER
FFL	FINISH FLOOR LEVEL
FLEX	FLEXIBLE DUCT
FOB	FLAT ON BOTTOM
FOT	FLAT ON TOP
FSD	FIRE SMOKE DAMPER
KED	KITCHEN EXHAUST DUCT
KMD	KITCHEN MAKE-UP AIR DUCT
MAU	MAKE-UP AIR UNIT / VENTILATION UNIT
OA	OUTSIDE AIR
OED	OPEN END DUCT
RA	RETURN AIR
RAD	RETURN AIR DUCT
RTU	ROOF TOP AIR CONDITIONING UNIT
SA	SUPPLY AIR
SAD	SUPPLY AIR DUCT
T	THERMOSTAT
TG	TRANSFER GRILLE
TOD	TOP OF DUCT
VAV	VARIABLE AIR VALVE
VD	VOLUME DAMPER

NOTE: THIS DRAWING IS PROVIDED AS REFERENCE FOR COORDINATION ONLY. IT IS NOT INTENDED TO REPLACE DESIGN, FABRICATION, OR SHOP DRAWINGS OR TO RELIEVE CONTRACTOR OF COORDINATION RESPONSIBILITY.

ADDRESS
RENOVATIONS
&
ADDITIONS

REV	DESCRIPTION	DATE
A	ISSUED FOR REVIEW & COMMENT	05/09/2019

Drawn: RA
Checked: BC
Date: 05/09/2019
Scale: 1/4"=1'-0"

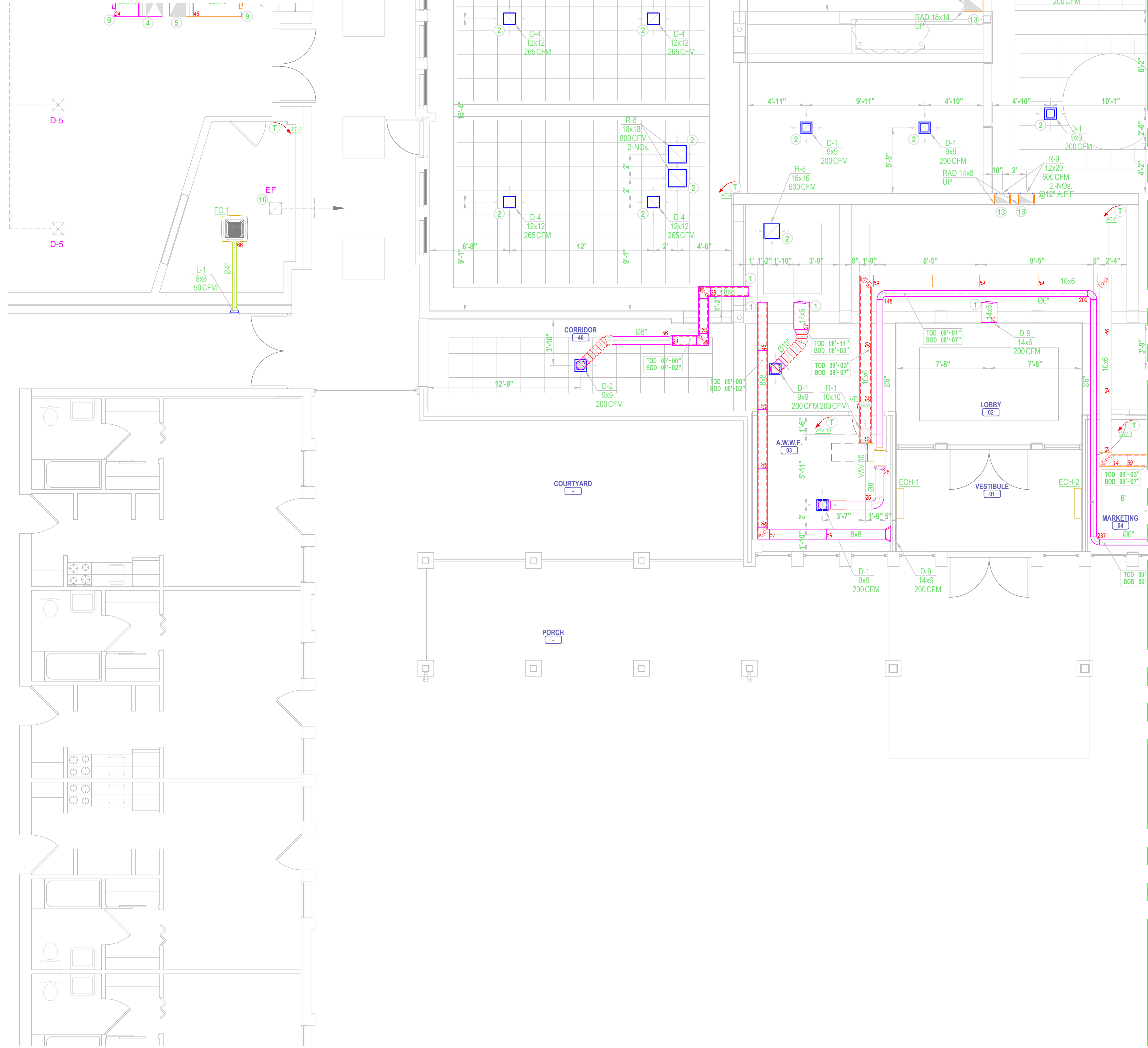
HVAC DUCTWORK
PLAN - PART B

SHEET TITLE

H-102

SHEET NO.

FOR CONTINUATION SEE DWG. H-101.DWG



NOTES:

- 1 SEE HVAC DUCTWORK ATTIC PLAN, H-20 FOR CONTINUATION
- 2 GRD FED FROM DUCT ON ATTIC FLOOR ABOVE. SEE ATTIC PLAN DRAWING H-200 FOR CONTINUATION.
- 3 DUCT IN ATTIC SPACE.
- 4 32x16 SUPPLY DUCT DOWN FROM RTU. SEE HVAC ROOF PLAN, H-300 FOR CONTINUATION.
- 5 32x16 RETURN DUCT UP TO RTU. SEE HVAC ROOF PLAN, H-300 FOR CONTINUATION.
- 6 18x14 RETURN DUCT, SEE HVAC ROOF PLAN, H-300 FOR CONTINUATION.
- 7 28x12 SUPPLY DUCT FROM KITCHEN HOOD, BY FOOD SERVICE EQUIPMENT CONTRACTOR, UP TO ATTIC. REFER TO HVAC DUCTWORK ATTIC PLAN, H-200, FOR CONTINUATION.
- 8 14x10 EXHAUST DUCT FROM KITCHEN HOOD, BY FOOD SERVICE EQUIPMENT CONTRACTOR, UP TO ATTIC. REFER TO HVAC DUCTWORK ATTIC PLAN, H-200, FOR CONTINUATION.
- 9 PROVIDE DUCT TRANSITION AS REQUIRED TO CONNECT TO EXISTING DUCT.
- 10 EXISTING EXHAUST PAN AND DUCTWORK TO REMAIN
- 11 EXISTING ELECTRIC WALL HEATER TO REMAIN
- 12 PROVIDE 16x4 EXHAUST AIR DUCT CONNECTION TO DISHWASHER HOOD. REFER TO HVAC DUCTWORK ATTIC PLAN, H-200 FOR CONTINUATION.
- 13 RETURN DUCT FROM LOW RETURN UP TO ATTIC. SEE HVAC DUCTWORK ATTIC PLAN, H-200 FOR CONTINUATION.
- 14 LOCATE FAN COIL UNIT SO THAT IT FALLS BETWEEN EXISTING JOISTS.
- 15 DUCTWORK RUNS EXPOSED IN SPACE.
- 16 DUCTWORK SHALL RUN BETWEEN EXISTING ROOF FRAMING.
- 17 INSTALL CABINET HEATER RECESSED IN BULKHEAD
- 18 PROVIDE DUCT OFFSET TO TRANSITION BETWEEN ATTIC SPACE AND MECHANICAL ROOM.
- 19 PROVIDE DUCT OFFSET TO TRANSITION BETWEEN MECHANICAL ROOM AND JUST BELOW CEILING IN ADJACENT SPACE.
- 20 PROVIDE DUCT PRESSURE SENSOR PER MANUFACTURER'S RECOMMENDATIONS FOR CONTROL VAV SYSTEM.

CONTRACTOR

ABBREVIATIONS:

AC	GAS FURNACE WITH SPLIT SYSTEM AC
AFF	ABOVE FINISHED FLOOR
AFR	ABOVE FINISHED ROOF
BOD	BOTTOM OF DUCT
CD	CEILING DIFFUSER
CFM	CUBIC FEET PER MINUTE
COD	CABLE OPERATED DAMPER
CU	CONDENSING UNITS
EA	EXHAUST AIR
EAD	EXHAUST AIR DUCT
EF	EXHAUST FAN
FC	MINI SPLIT SYSTEM HEAT PUMP
FCL	FALSE CEILING LEVEL
FD	FIRE DAMPER
FFL	FINISH FLOOR LEVEL
FLEX	FLEXIBLE DUCT
FOB	FLAT ON BOTTOM
FOT	FLAT ON TOP
FSD	FIRE SMOKE DAMPER
KED	KITCHEN EXHAUST DUCT
KMD	KITCHEN MAKE-UP AIR DUCT
MAU	MAKE-UP AIR UNIT / VENTILATION UNIT
OA	OUTSIDE AIR
OED	OPEN END DUCT
RA	RETURN AIR
RAD	RETURN AIR DUCT
RTU	ROOF TOP AIR CONDITIONING UNIT
SA	SUPPLY AIR
SAD	SUPPLY AIR DUCT
T	THERMOSTAT
TG	TRANSFER GRILLE
TOD	TOP OF DUCT
VAV	VARIABLE AIR VALVE
VD	VOLUME DAMPER

NOTE: THIS DRAWING IS PROVIDED AS REFERENCE FOR COORDINATION ONLY. IT IS NOT INTENDED TO REPLACE DESIGN, FABRICATION, OR SHOP DRAWINGS OR TO RELIEVE CONTRACTOR OF COORDINATION RESPONSIBILITY.

**ADDRESS
RENOVATIONS
&
ADDITIONS**

REV	DESCRIPTION	DATE
A	ISSUED FOR REVIEW & COMMENT	05/09/2019

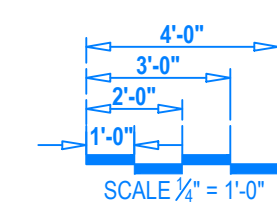
Drawn:	RA
Checked:	BC
Date:	05/09/2019
Scale:	1/4"=1'-0"

**HVAC DUCTWORK
PLAN - PART C**

SHEET TITLE

H-103

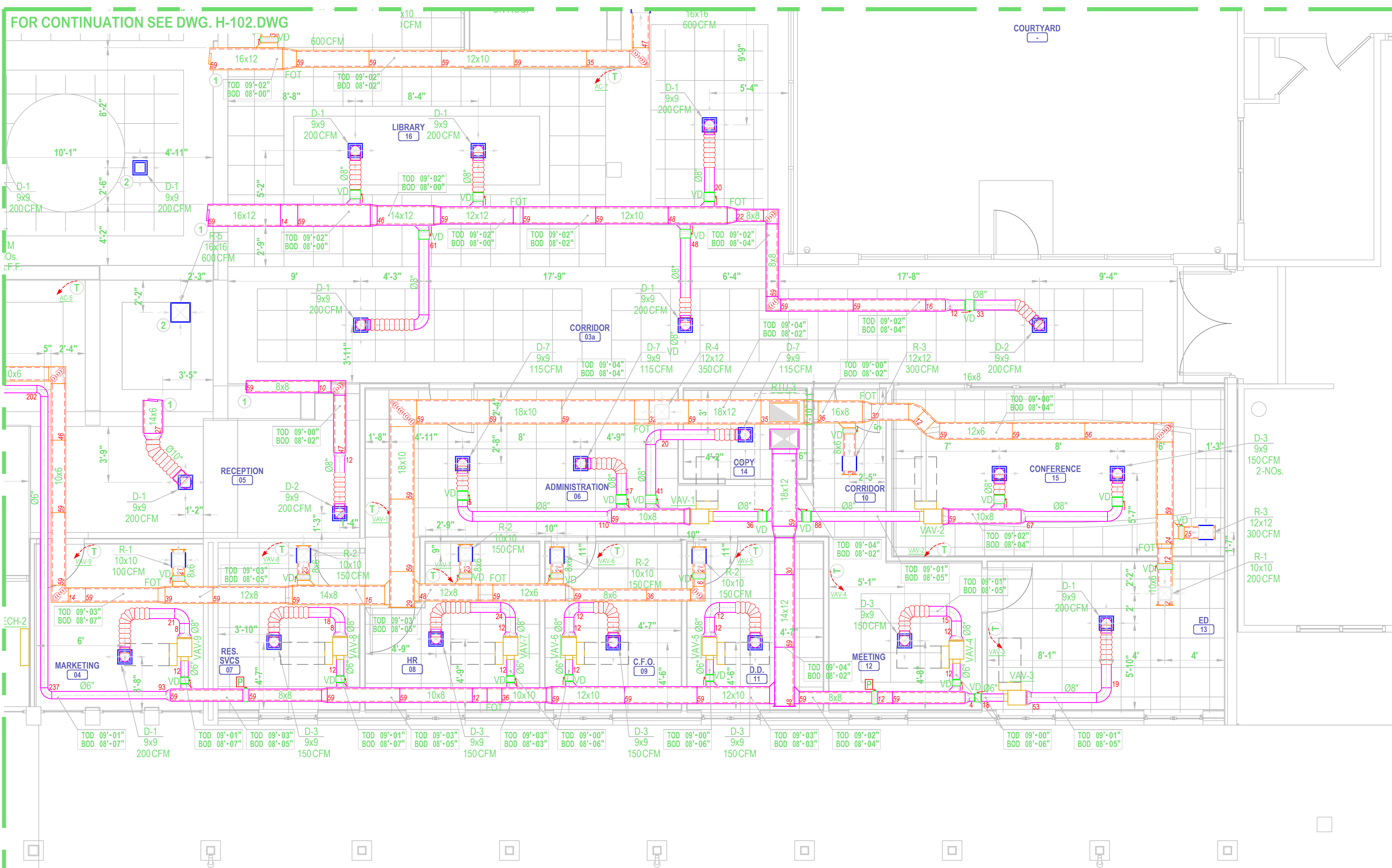
SHEET NO.



FOR CONTINUATION SEE DWG. H-104.DWG

FOR CONTINUATION SEE DWG. H-102.DWG

FOR CONTINUATION SEE DWG. H-103.DWG



CONTRACTOR

NOTES:

- ① SEE HVAC DUCTWORK ATTIC PLAN, H-20 FOR CONTINUATION
- GRD FED FROM DUCT ON ATTIC FLOOR ABOVE. SEE ATTIC PLAN DRAWING H-200 FOR CONTINUATION.
- ② DUCT IN ATTIC SPACE.
- ③ 32x16 SUPPLY DUCT DOWN FROM RTU. SEE HVAC ROOF PLAN, H-300 FOR CONTINUATION.
- ④ 32x16 RETURN DUCT UP TO RTU. SEE HVAC ROOF PLAN, H-300 FOR CONTINUATION.
- ⑤ 18x14 RETURN DUCT, SEE HVAC ROOF PLAN, H-300 FOR CONTINUATION.
- ⑥ 28x12 SUPPLY DUCT FROM KITCHEN HOOD, BY FOOD SERVICE EQUIPMENT
- ⑦ CONTRACTOR, UP TO ATTIC. REFER TO HVAC DUCTWORK ATTIC PLAN, H-200, FOR CONTINUATION.
- ⑧ 14x10 EXHAUST DUCT FROM KITCHEN HOOD, BY FOOD SERVICE EQUIPMENT
- ⑨ CONTRACTOR, UP TO ATTIC. REFER TO HVAC DUCTWORK ATTIC PLAN, H-200, FOR CONTINUATION.
- ⑩ PROVIDE DUCT TRANSITION AS REQUIRED TO CONNECT TO EXISTING DUCT.
- EXISTING EXHAUST PAN AND DUCTWORK TO REMAIN
- ⑪ EXISTING ELECTRIC WALL HEATER TO REMAIN
- ⑫ PROVIDE 16x4 EXHAUST AIR DUCT CONNECTION TO DISHWASHER HOOD. REFER TO HVAC DUCTWORK ATTIC PLAN, H-200 FOR CONTINUATION.
- ⑬ RETURN DUCT FROM LOW RETURN UP TO ATTIC. SEE HVAC DUCTWORK ATTIC PLAN, H-200 FOR CONTINUATION.
- ⑭ LOCATE FAN COIL UNIT SO THAT IT FALLS BETWEEN EXISTING JOISTS.
- ⑮ DUCTWORK RUNS EXPOSED IN SPACE.
- DUCTWORK SHALL RUN BETWEEN EXISTING ROOF FRAMING.
- ⑰ INSTALL CABINET HEATER RECESSED IN BULKHEAD
- ⑱ PROVIDE DUCT OFFSET TO TRANSITION BETWEEN ATTIC SPACE AND MECHANICAL ROOM.
- PROVIDE DUCT OFFSET TO TRANSITION BETWEEN MECHANICAL ROOM AND JUST BELOW CEILING IN ADJACENT SPACE.
- ⑲ PROVIDE DUCT PRESSURE SENSOR PER MANUFACTURER'S RECOMMENDATIONS FOR CONTROL VAV SYSTEM.

ABBREVIATIONS:

AC	GAS FURNACE WITH SPLIT SYSTEM AC
AFV	ABOVE FINISHED FLOOR
AFR	ABOVE FINISHED ROOF
BOD	BOTTOM OF DUCT
CD	CEILING DIFFUSER
CFM	CUBIC FEET PER MINUTE
COD	CABLE OPERATED DAMPER
CU	CONDENSING UNITS
EA	EXHAUST AIR
EAD	EXHAUST AIR DUCT
EF	EXHAUST FAN
FC	MINI SPLIT SYSTEM HEAT PUMP
FCL	FALSE CEILING LEVEL
FD	FIRE DAMPER
FFL	FINISH FLOOR LEVEL
FLEX	FLEXIBLE DUCT
FOT	FLAT ON TOP
FSD	FIRE SMOKE DAMPER
KED	KITCHEN EXHAUST DUCT
KMD	KITCHEN MAKE-UP AIR DUCT
MAU	MAKE-UP AIR UNIT / VENTILATION UNIT
OA	OUTSIDE AIR
OED	OPEN END DUCT
RA	RETURN AIR
RAD	RETURN AIR DUCT
RTU	ROOF TOP AIR CONDITIONING UNIT
SA	SUPPLY AIR
SAD	SUPPLY AIR DUCT
T	THERMOSTAT
TG	TRANSFER GRILLE
TOD	TOP OF DUCT
VAV	VARIABLE AIR VALVE
VD	VOLUME DAMPER

NOTE: THIS DRAWING IS PROVIDED AS REFERENCE FOR COORDINATION ONLY. IT IS NOT INTENDED TO REPLACE DESIGN, FABRICATION, OR SHOP DRAWINGS OR TO RELIEVE CONTRACTOR OF COORDINATION RESPONSIBILITY.

ADDRESS RENOVATIONS & ADDITIONS

REV	DESCRIPTION	DATE
A	ISSUED FOR REVIEW & COMMENT	05/09/2019

Drawn:	RA
Checked:	BC
Date:	05/09/2019
Scale:	1/4"=1'-0"

HVAC DUCTWORK PLAN - PART D

SHEET TITLE

H-104

SHEET NO.

