

EXIT PLAN LEGEND

OCCUPANCY GROUP → B OCCUPANCY LOAD FACTOR → 100
 AREA IN SQUARE FEET → TOTAL OCCUPANT LOAD →

CLEAR DOOR WIDTH → 34
 MAXIMUM OCCUPANT LOAD CAPACITY FOR THE DOOR → 170

DIRECTION OF TRAVEL → NUMBER OF OCCUPANTS →

OCCUPANCY CALCULATION

IBC 2012, SEC 1004

OCCUPANCY: HAIR SALON AREA (6,383 SF)

OCCUPANCY	AREA	OCCUPANCY LOAD FACTOR	NO. OF OCCUPANTS
OCCUPANCY "B" (SALONS)	3,204 SF	100	32
OCCUPANCY "B" (BREAK ROOM)	77 SF	15	5
OCCUPANCY "B" (OFFICE)	52 SF	100	1
OCCUPANCY "B" (LAUNDRY)	76 SF	300	1
OCCUPANCY "B" (LOBBY)	260 SF	15	15
OCCUPANCY "B" (HALLWAYS AND TOILETS)	1,723 SF		

TOTAL OCCUPANT LOAD: 54 OCCUPANTS

NUMBER OF REQUIRED EXITS (TABLE 1015.1)
 OCCUPANCY B 54 OCCUPANTS > 49
 2 EXIT REQUIRED
 3 EXITS PROVIDED

PLUMBING FIXTURES COUNT

	REQUIRED			PROVIDED		
	M	W	X	M	W	X
LAVATORY (1 PER 40)	1	1	1	1	1	1
WC (1 PER 25)	1	1	1	1	1	1
URINAL (50%)	0	1	1	0	1	1
SERVICE SINK (1 PER 500)			1			1

GENERAL NOTE

A. NO FURNITURE SHALL BE PLACED TO BLOCK REQUIRED ACCESSIBILITY ROUTE AND MANEUVERING CLEARANCES.
 B. NO FIXTURES, SHELVES, FURNITURE OR OTHER MATERIALS SHALL BE PLACED TO OBSTRUCT ACCESS OR TO PROPER OPERATION OF ANY FIRE PROTECTION EQUIPMENT.

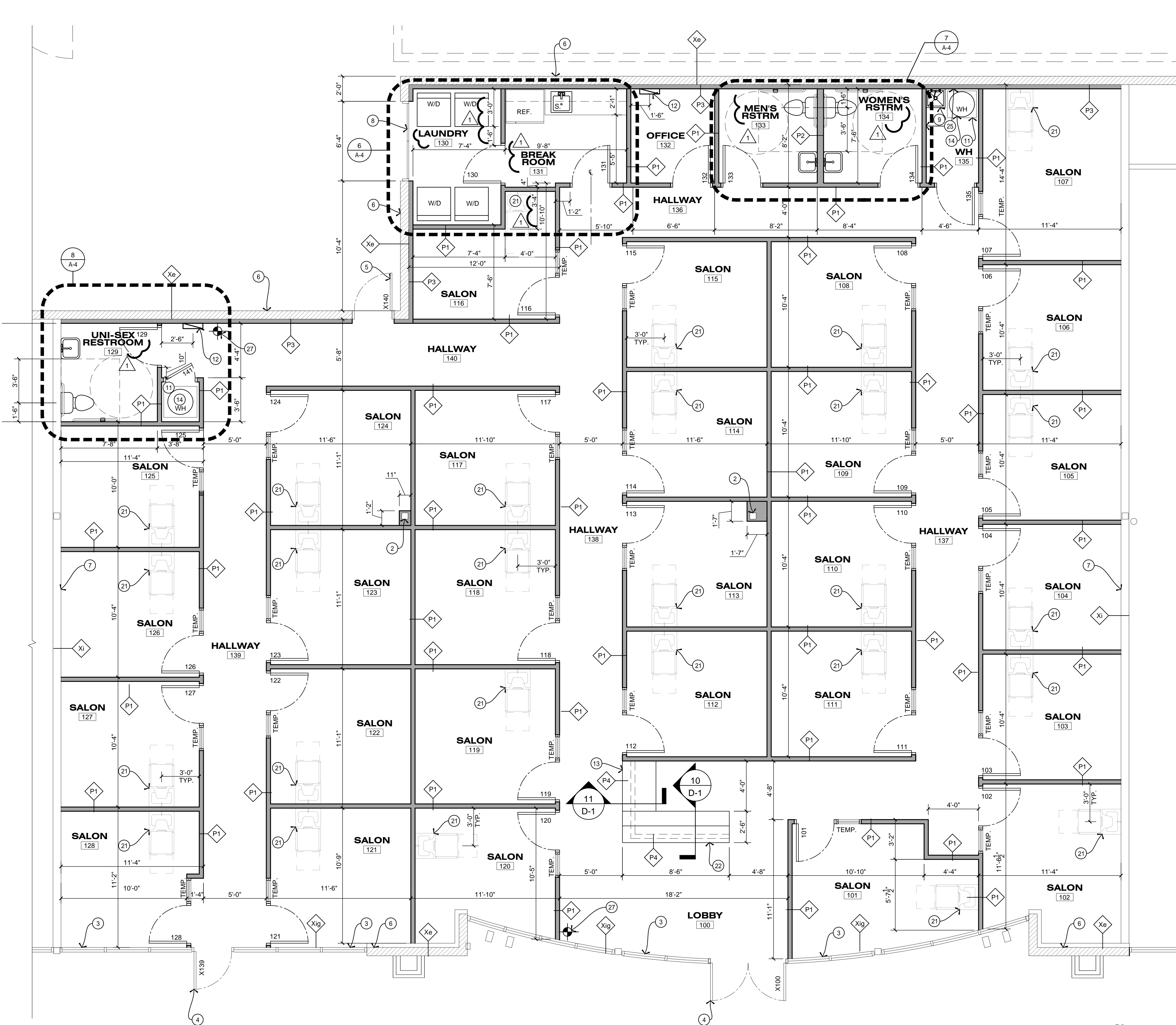
EXIT PLAN PLAN

SCALE: 3/16" = 1'-0"



Exit Plan

3/16"=1'-0"



KEYNOTES

1. EXISTING FIRE EXIT TO REMAIN
2. EXISTING STEEL COLUMN TO REMAIN
3. EXISTING ALUMINIUM STORE FRONT TO REMAIN
4. EXISTING GLASS DOOR TO REMAIN
5. EXISTING METAL DOOR TO REMAIN
6. EXISTING EXTERIOR WALL TO REMAIN
7. EXISTING PARTITION WALL TO REMAIN
8. EXISTING DOOR TO REMAIN
9. MOP SINK
10. NOT USED
11. 18" HIGH PLATFORM
12. ELECTRICAL PANEL, REFER TO ELECTRICAL
13. ADA COUNTER @ 30" A.F.F.
14. WATER HEATER
15. NOT USED
16. NOT USED
17. NOT USED
18. NOT USED
19. NOT USED
20. NOT USED
21. SHAMPOO CHAIR, REFER TO PLUMBING
22. COUNTER @ 42" A.F.F.
23. NOT USED
24. NOT USED
25. NOT USED
26. NOT USED
27. WALL MOUNTED FIRE EXTINGUISHER , 2A10BC

LEGEND

- INTERIOR ELEVATIONS
- SLOPE FINISHED FLOOR TO DRAIN
- DOOR NUMBERS TAG SEE DOOR SCHEDULE REFER TO SHEET A-6
- WINDOW NUMBERS TAG, SEE WINDOW SCHEDULE REFER TO SCHEDULE A-6
- ROOM NAME ROOM TAG, SEE ROOM FINISH SCHEDULE REFER TO SCHEDULE A-6
- CONSTRUCTION SYSTEM TYPES TAG REFER TO SHEET D-1
- KEYNOTES

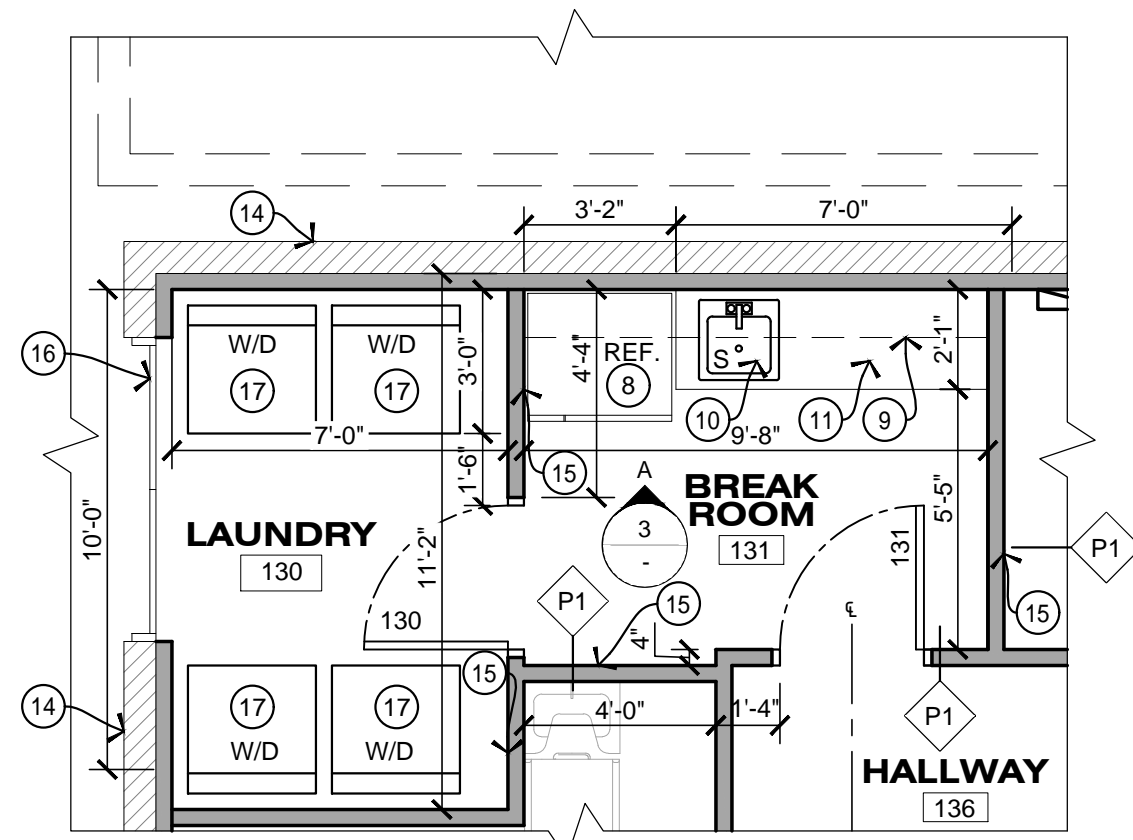
CONSTRUCTION SYSTEMS

- FOR CONSTRUCTION SYSTEMS DETAILS REFER TO SHEET D-1
- EXISTING EXTERIOR WALLS.
 - EXISTING PARTITION WALLS.
 - EXISTING STOREFRONT TO REMAIN (TEMPERED GLASS).
 - INTERIOR WALLS
2 X 4" STUDS @ 24" O.C.
WITH 5/8" GYPSUM BOARD EACH SIDE, U.N.O.
 - INTERIOR WALLS
2 X 6" STUDS @ 24" O.C.
WITH 5/8" W.R. GYPSUM BOARD EACH SIDE.
 - FURRING
2 X 4" STUDS @ 24" O.C.
WITH 5/8" GYPSUM BOARD.
 - PONY WALL
2 X 4" STUDS @ 16" O.C.
WITH 5/8" GYPSUM BOARD EACH SIDE, U.N.O.

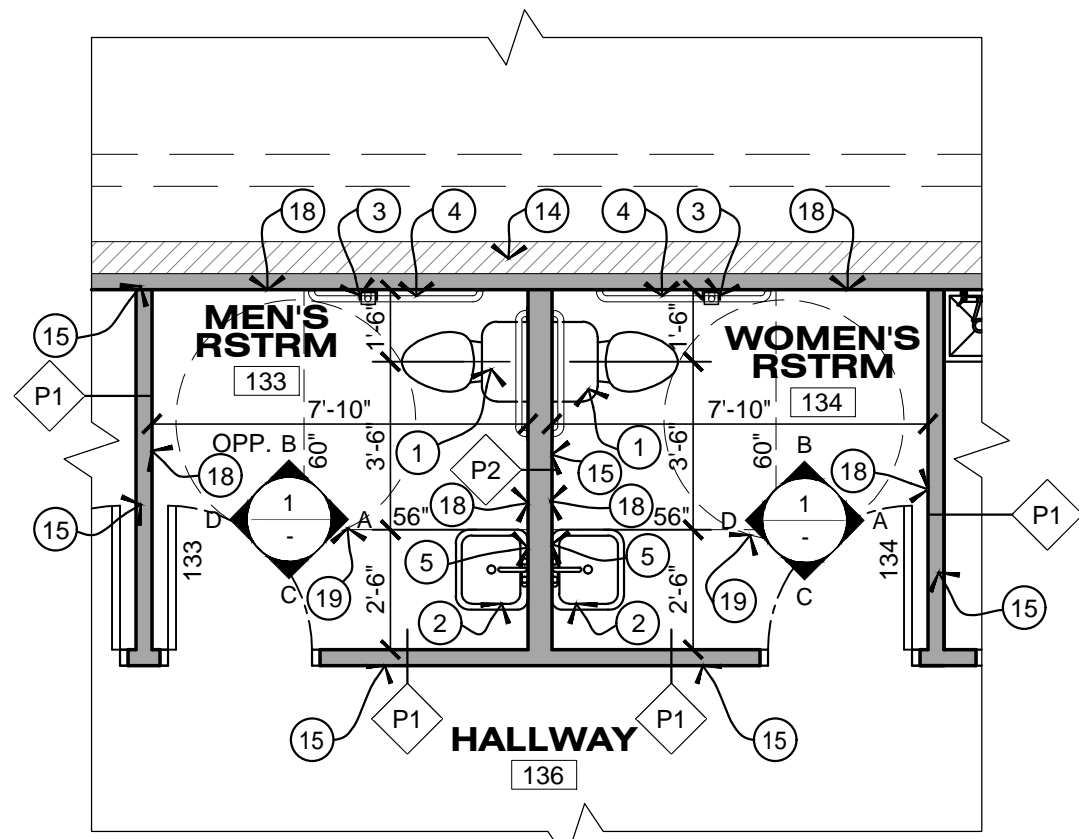
NEW FLOOR PLAN
SCALE: 1/4" = 1'-0"

New Floor Plan

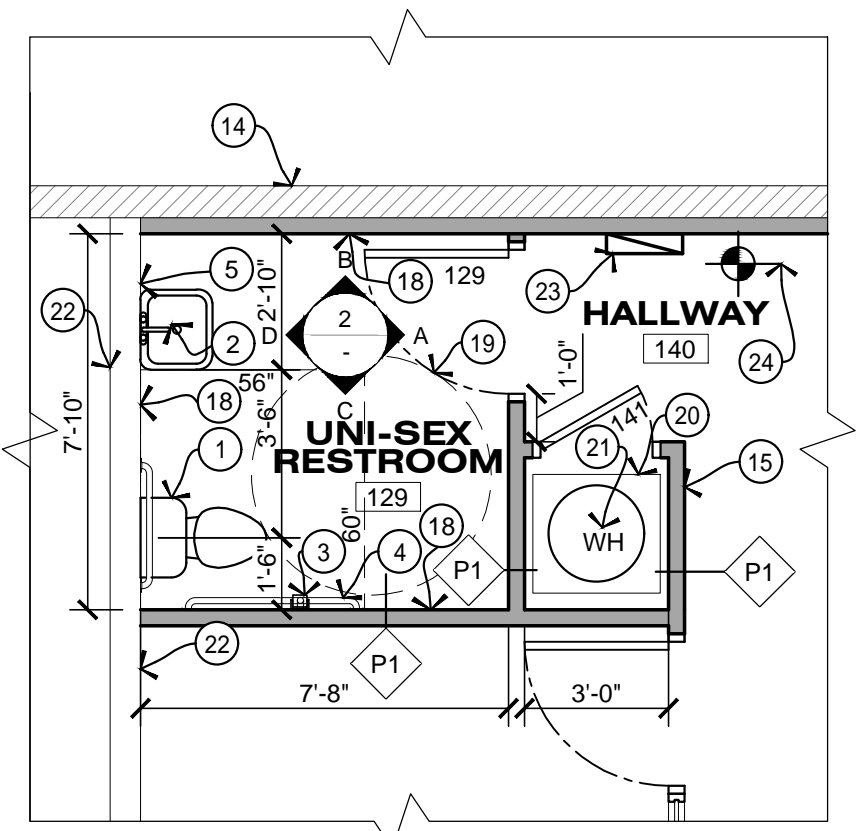
1/4"=1'-0"



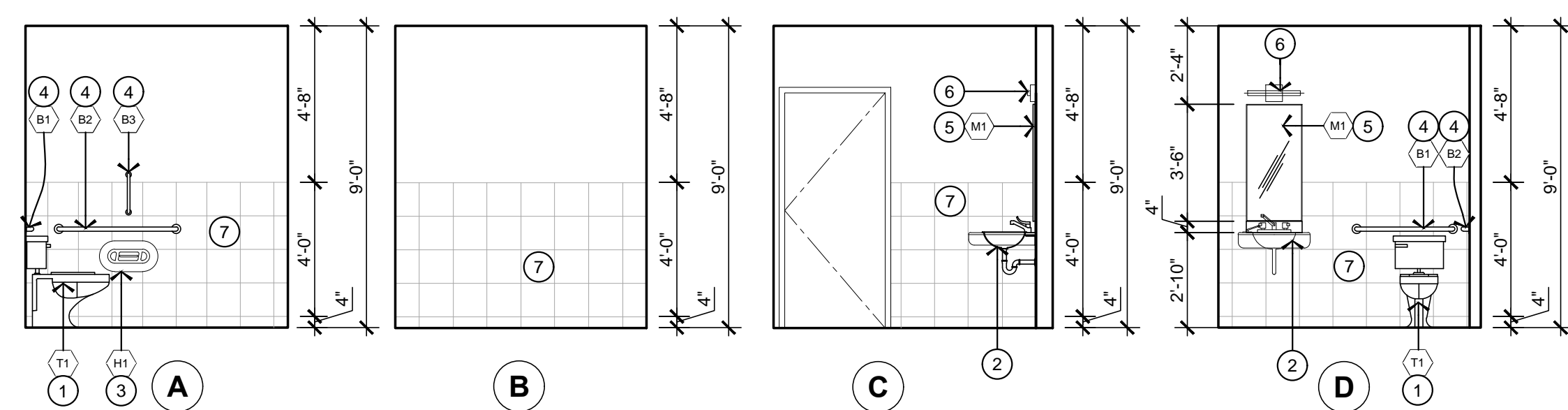
6 ENLARGED FLOOR PLAN
SCALE: 1/4" = 1'-0"



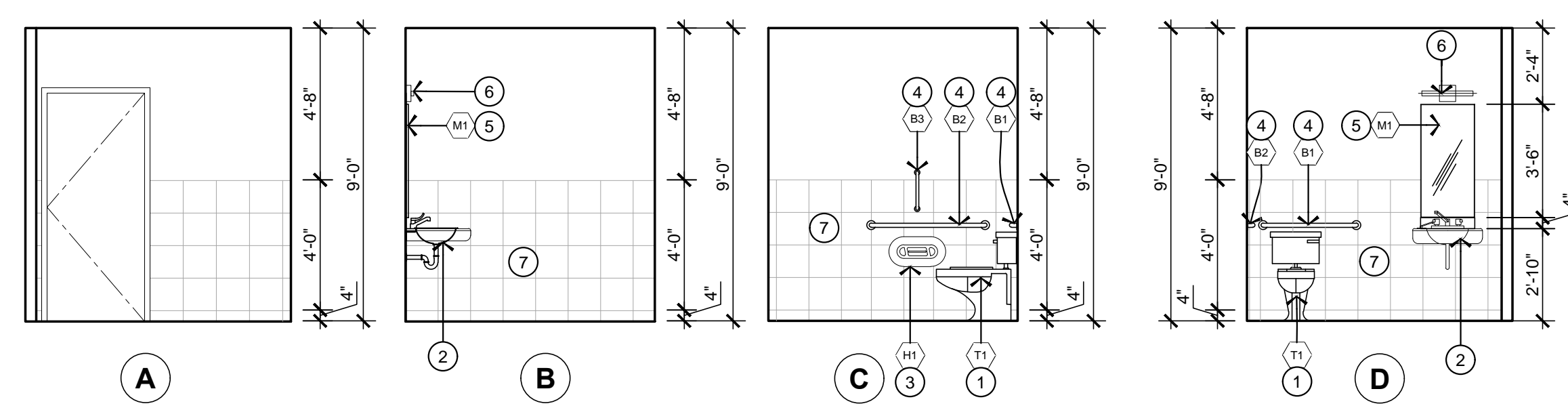
7 ENLARGED FLOOR PLAN
SCALE: 1/4" = 1'-0"



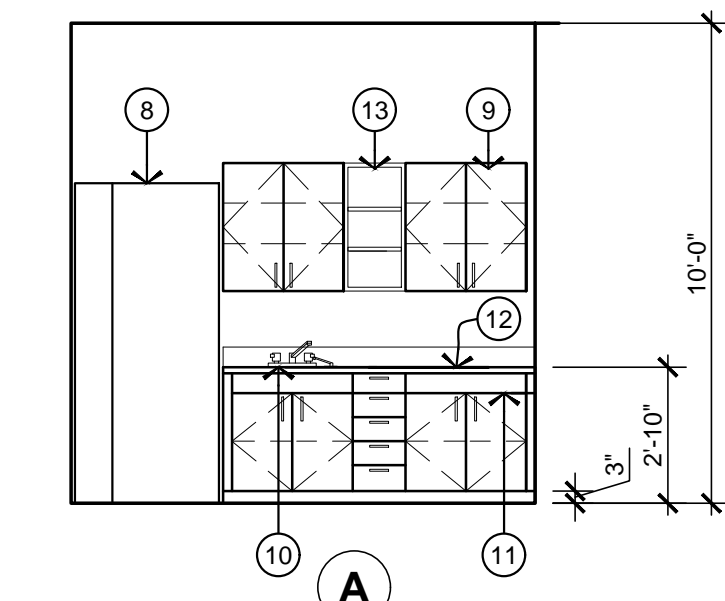
8 ENLARGED FLOOR PLAN
SCALE: 1/4" = 1'-0"



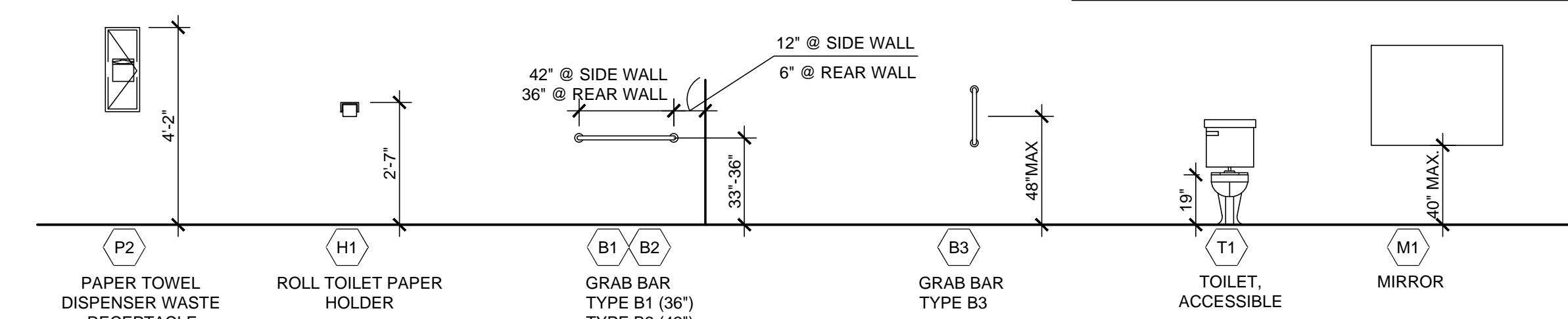
1 WOMEN'S RESTROOM - OPPOSITE MEN'S RESTROOM
SCALE: 1/4" = 1'-0"



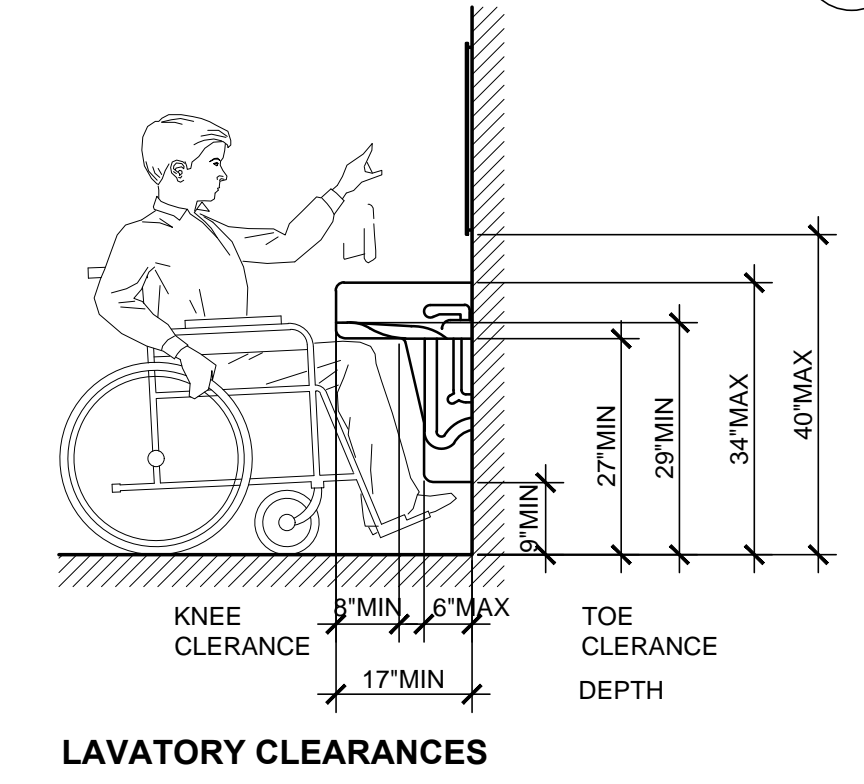
2 UNI-SEX RESTROOM
SCALE: 1/4" = 1'-0"



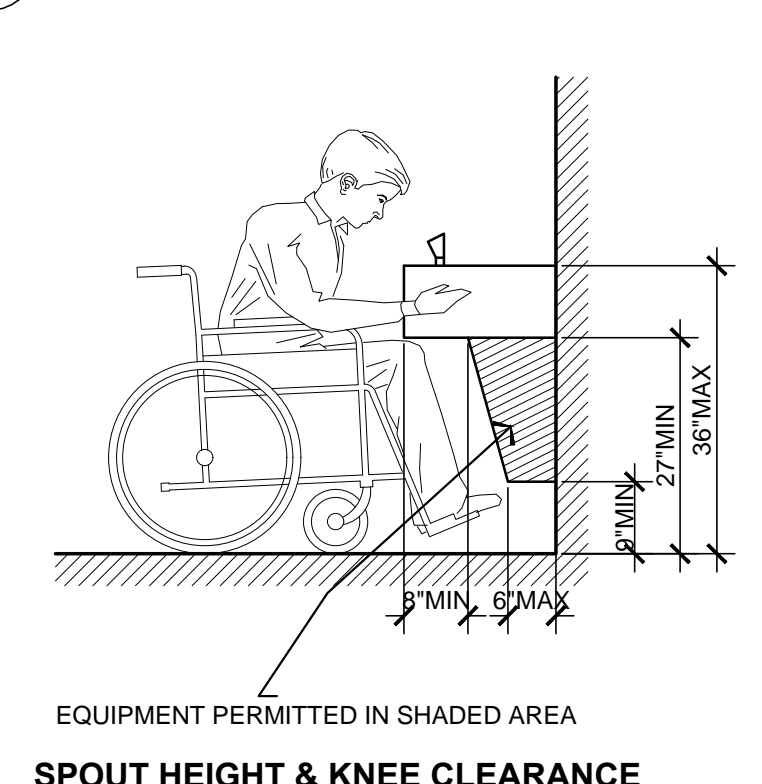
3 BREAK ROOM
SCALE: 1/4" = 1'-0"



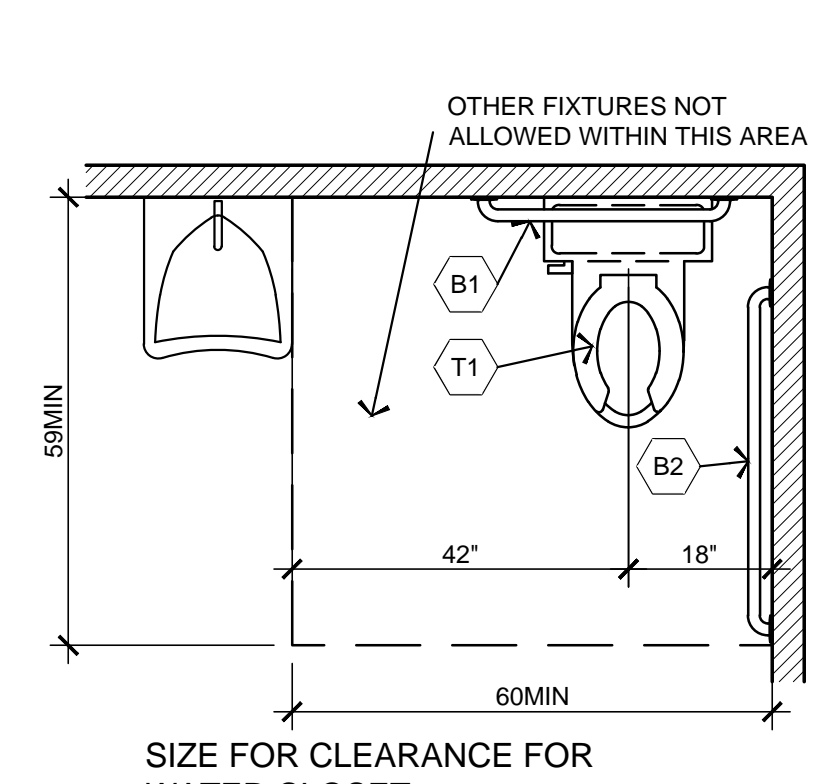
4 TOILET ACCESSORIES / PLUMBING FIXTURES MOUNTING HEIGHTS
SCALE: 3/8" = 1'-0"



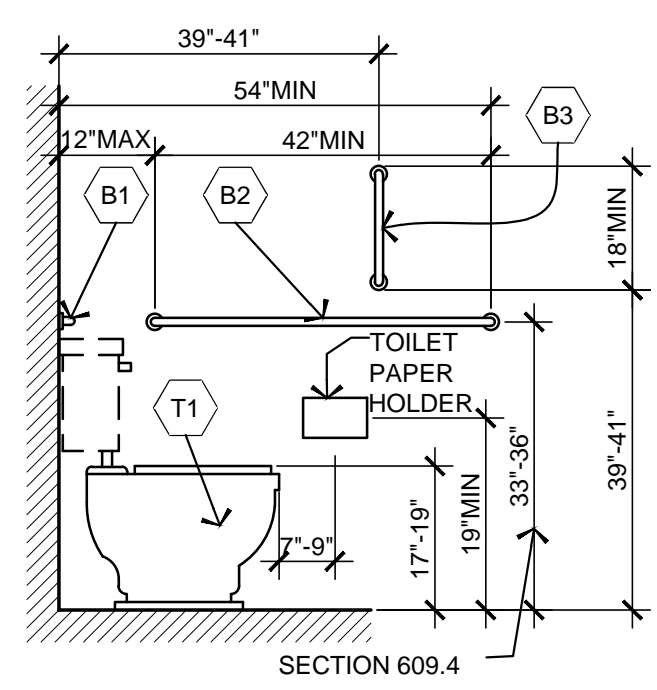
LAVATORY CLEARANCES



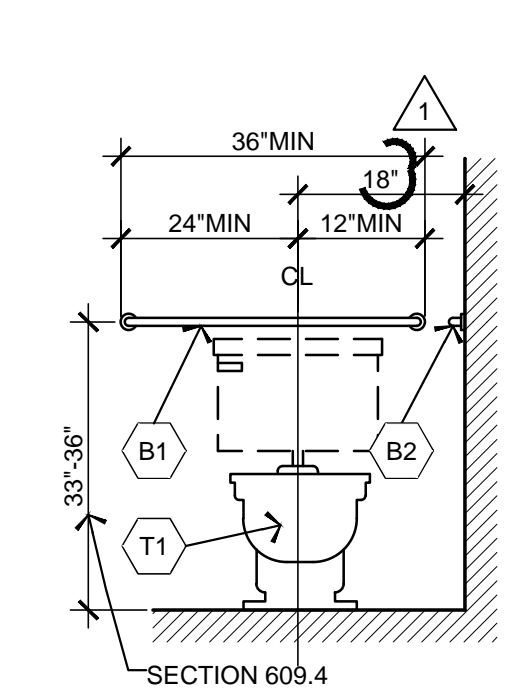
SPOUT HEIGHT & KNEE CLEARANCE



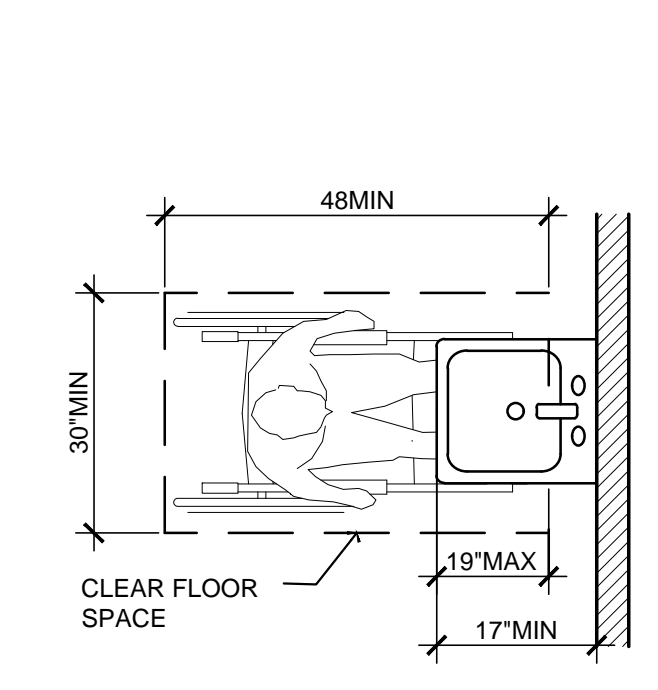
SIZE FOR CLEARANCE FOR WATER CLOSET



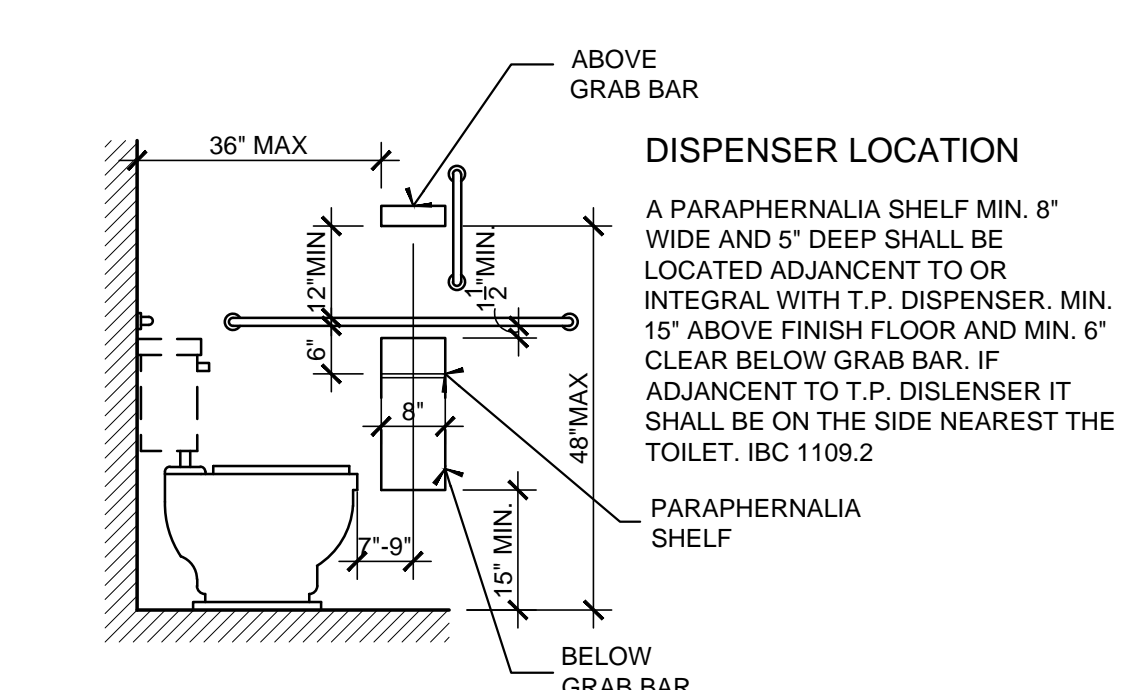
SIDE WALL GRAB BAR FOR WATER CLOSET



REAR WALL GRAB BAR FOR WATER CLOSET



CLEAR FLOOR SPACE AT LAVATORIES



DISPENSER LOCATION

5 ADA REGULATIONS
SCALE: 1/2" = 1'-0"

ADA REGULATION
PROJECT SHALL COMPLY WITH IBC 3409.6 FOR ACCESSIBLE UPGRADES UP TO 20% OF JOB COST

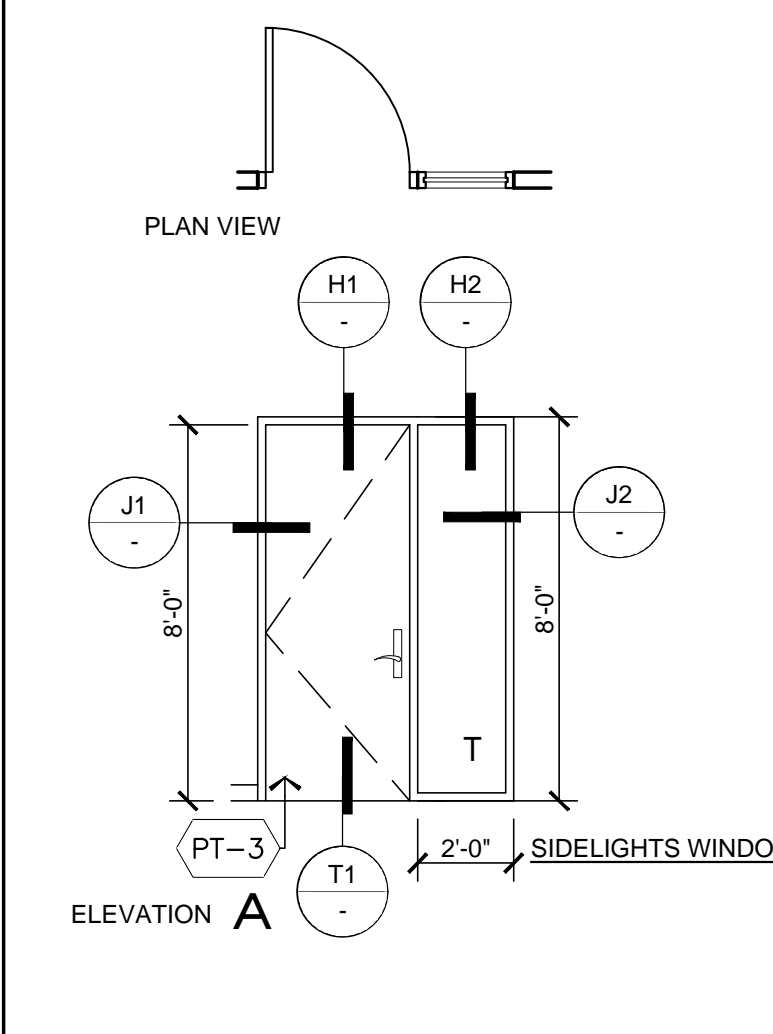
KEYNOTES	
1.	WATER CLOSET, REFER TO PLUMBING
2.	LAVATORY, REFER TO PLUMBING
3.	TOILET PAPER HOLDER
4.	GRAB BAR
5.	MIRROR
6.	VANITY LIGHT FIXTURE
7.	CERAMIC TILE AT 4'-4" A.F.F.
8.	REFRIGERATOR, PROVIDE 1/4" C.W. LINE FOR ICE MAKER
9.	UPPER CABINETS
10.	KITCHEN SINK, REFER TO PLUMBING
11.	BASE CABINETS, FINISHES TO BE SELECTED BY ARCHITECT / TENANT
12.	PLASTIC LAMINATE COUNTERTOP AT 34" A.F.F. FINISHES TO BE SELECTED BY ARCHITECT / TENANT
13.	SHelves
14.	EXISTING EXTERIOR WALL TO REMAIN
15.	NEW INTERIOR WALL
16.	EXISTING DOOR TO REMAIN
17.	NEW STACKED WASHER & DRYER
18.	W.R. GYP. BOARD AND CERAMIC TILE
19.	60" DIAM. ADA TURNING CLEARANCE
20.	18" HIGH PLATFORM
21.	WATER HEATER
22.	EXISTING PARTITION WALL TO REMAIN
23.	ELECTRICAL PANEL, REFER TO ELECTRICAL
24.	WALL MOUNTED FIRE EXTINGUISHER, 2A10BC
25.	ADA CLEARANCE 56"x60"

LEGEND	
A	INTERIOR ELEVATIONS
D	SLOPE FINISHED FLOOR TO DRAIN
XXX	DOOR NUMBERS TAG, SEE DOOR SCHEDULE REFER TO SHEET A-6
XXX	WINDOW NUMBERS TAG, SEE WINDOW SCHEDULE REFER TO SCHEDULE A-6
ROOM NAME	ROOM TAG, SEE ROOM FINISH SCHEDULE REFER TO SCHEDULE A-6
X	CONSTRUCTION SYSTEM TYPES TAG REFER TO SHEET D-1
(X)	KEYNOTES

DOOR SCHEDULE NOTES

- A. ALL DOOR HARDWARE TO BE LEVER TYPE, OPERABLE WITH A CLOSED FIST.
- B. LOCKS AND LATCHES ARE TO BE OPERABLE WITH ONE OPERATION OF THE HAND TO UNLOCK AND UNLATCH TO EXIT.

DOOR TYPES



DOOR SCHEDULE LEGEND

DOOR NO. PER SCHEDULE	DOOR TYPE: PER SCHEDULE	DOOR GLASS TYPE: GL-1: CLEAR LAMINATED	FRAME HEAD DETAIL: REFER TO REFERENCED DETAIL	LABEL (DOOR FIRE RATING): 20 = 20 MINUTE FIRE RATED DOOR 45 = 45 MINUTE FIRE RATED DOOR 60 = 60 MINUTE FIRE RATED DOOR
DOOR SIZE WIDTH X HEIGHT X 1-3/4"	DOOR FACING FINISH PT-3 = PAINT SELECTED BY OWNER	FRAME CONSTRUCTION: HM = HOLLOW METAL FRAME AL = ALUMINUM FRAME	FRAME JAMB DETAIL: REFER TO REFERENCED DETAIL	HARDWARE NO.
	DOOR CONSTRUCTION: AL = ALUMINUM WD = SOLID CORE WOOD DOOR HM = HOLLOW METAL DOOR GL = TEMPERED GLASS DOOR EX = EXISTING	FRAME FACING FINISH: PT = PAINT CL = CLEAR GL = GLASS AL-1 = DARK BRONZE ALUMINUM X = EXISTING TO REMAIN	FRAME THRESHOLD DETAIL: REFER TO REFERENCED DETAIL	REMARKS ADDITIONAL ITEMS AS NOTED OFCI - OWNER FURNISHED CONTRACTOR INSTALLED

NEW DOOR SCHEDULE

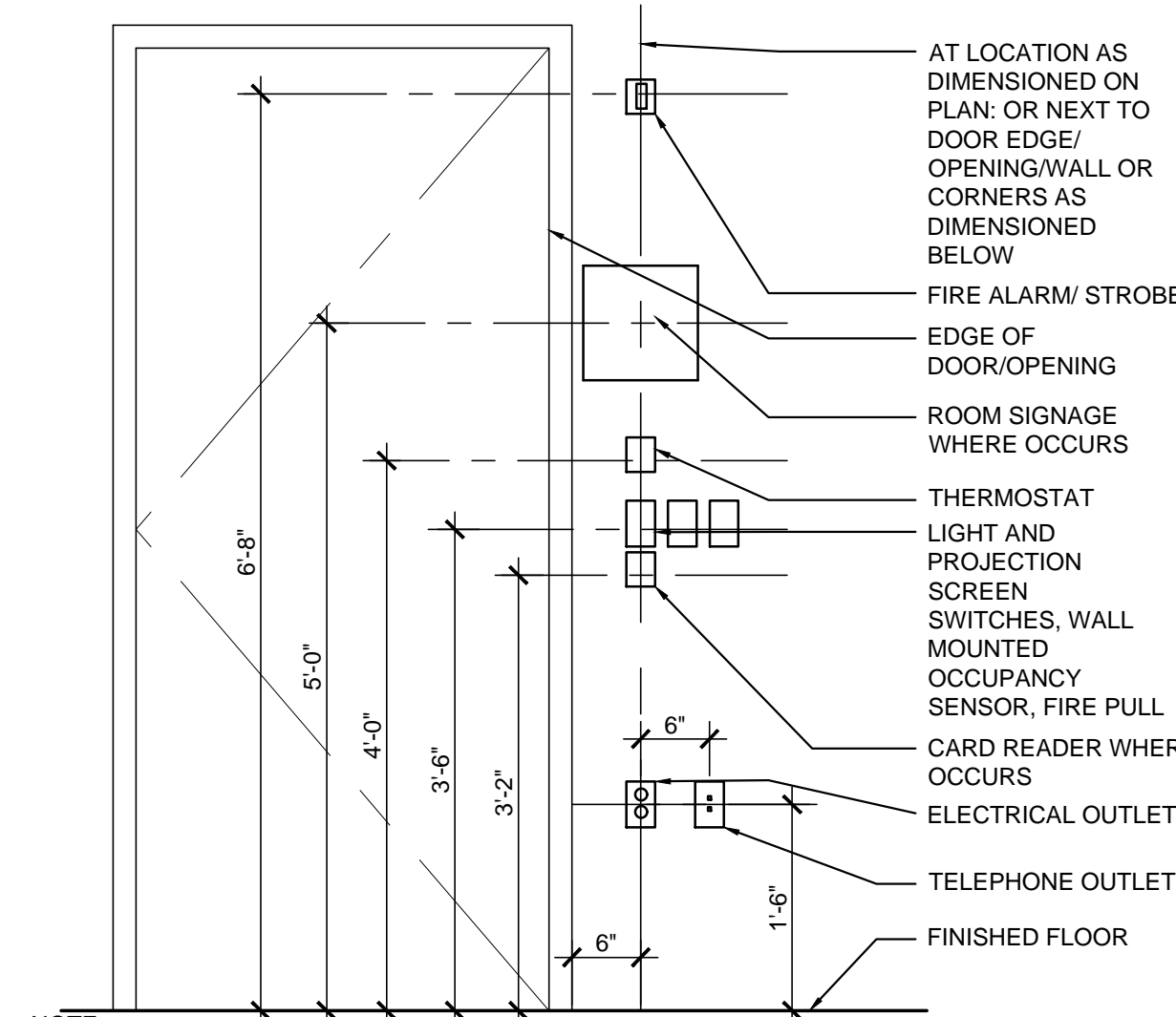
DOOR NO.	DOOR SIZE (WIDTH X HT.)	DOOR				FRAME			LABEL	HDWR.	REMARKS
		TYPE	CONST.	FINISH	GLASS	CONST.	FINISH	HEAD			
X100	6'-0" x 8'-0"									1	
X139	3'-0" x 8'-0"									1	
X140	3'-0" x 8'-0"									1	
101	3'-0" x 8'-0"	A	WD	PT-3		WD	WV-1	H1	J1	T1	3
102	3'-0" x 8'-0"	A	WD	PT-3		WD	WV-1	H1	J1	T1	3
103	3'-0" x 8'-0"	A	WD	PT-3		WD	WV-1	H1	J1	T1	3
104	3'-0" x 8'-0"	A	WD	PT-3		WD	WV-1	H1	J1	T1	3
105	3'-0" x 8'-0"	A	WD	PT-3		WD	WV-1	H1	J1	T1	3
106	3'-0" x 8'-0"	A	WD	PT-3		WD	WV-1	H1	J1	T1	3
107	3'-0" x 8'-0"	A	WD	PT-3		WD	WV-1	H1	J1	T1	3
108	3'-0" x 8'-0"	A	WD	PT-3		WD	WV-1	H1	J1	T1	3
109	3'-0" x 8'-0"	A	WD	PT-3		WD	WV-1	H1	J1	T1	3
110	3'-0" x 8'-0"	A	WD	PT-3		WD	WV-1	H1	J1	T1	3
111	3'-0" x 8'-0"	A	WD	PT-3		WD	WV-1	H1	J1	T1	3
112	3'-0" x 8'-0"	A	WD	PT-3		WD	WV-1	H1	J1	T1	3
113	3'-0" x 8'-0"	A	WD	PT-3		WD	WV-1	H1	J1	T1	3
114	3'-0" x 8'-0"	A	WD	PT-3		WD	WV-1	H1	J1	T1	3
115	3'-0" x 8'-0"	A	WD	PT-3		WD	WV-1	H1	J1	T1	3
116	3'-0" x 8'-0"	A	WD	PT-3		WD	WV-1	H1	J1	T1	3
117	3'-0" x 8'-0"	A	WD	PT-3		WD	WV-1	H1	J1	T1	3
118	3'-0" x 8'-0"	A	WD	PT-3		WD	WV-1	H1	J1	T1	3
119	3'-0" x 8'-0"	A	WD	PT-3		WD	WV-1	H1	J1	T1	3
120	3'-0" x 8'-0"	A	WD	PT-3		WD	WV-1	H1	J1	T1	3
121	3'-0" x 8'-0"	A	WD	PT-3		WD	WV-1	H1	J1	T1	3
122	3'-0" x 8'-0"	A	WD	PT-3		WD	WV-1	H1	J1	T1	3
123	3'-0" x 8'-0"	A	WD	PT-3		WD	WV-1	H1	J1	T1	3
124	3'-0" x 8'-0"	A	WD	PT-3		WD	WV-1	H1	J1	T1	3
125	3'-0" x 8'-0"	A	WD	PT-3		WD	WV-1	H1	J1	T1	3
126	3'-0" x 8'-0"	A	WD	PT-3		WD	WV-1	H1	J1	T1	3
127	3'-0" x 8'-0"	A	WD	PT-3		WD	WV-1	H1	J1	T1	3
128	3'-0" x 8'-0"	A	WD	PT-3		WD	WV-1	H1	J1	T1	3
129	3'-0" x 8'-0"	A	WD	PT-3		WD	WV-1	H1	J1	T1	2
130	3'-0" x 8'-0"	A	WD	PT-3		WD	WV-1	H1	J1	T1	3
131	3'-0" x 8'-0"	A	WD	PT-3		WD	WV-1	H1	J1	T1	3
132	3'-0" x 8'-0"	A	WD	PT-3		WD	WV-1	H1	J1	T1	3
133	3'-0" x 8'-0"	A	WD	PT-3		WD	WV-1	H1	J1	T1	2
134	3'-0" x 8'-0"	A	WD	PT-3		WD	WV-1	H1	J1	T1	2
135	3'-0" x 8'-0"	A	WD	PT-3		WD	WV-1	H1	J1	T1	3
141	2'-4" x 8'-0"	A	WD	PT-3		WD	WV-1	H1	J1	T1	3

HARDWARE SCHEDULE

TAG	HARDWARE NO.
1	THIS HARDWARE SET HAS TO COMPLY WITH IBC 2012 SEC. 1008.1.9.3. - LOCKING DEVICE IS ALLOWED FROM EGRESS SIDE PROVIDED FOLLOWING: - THE LOCKING DEVICE IS READILY DISTINGUISHABLE AS LOCKED. - READILY VISIBLE DURABLE SIGN IS POSTED ON THE EGRESS SIDE ON OR ADJACENT TO THE DOOR STATING: "THIS DOOR TO REMAIN UNLOCKED WHEN BUILDING IS OCCUPIED." THE SIGN SHALL BE IN LETTER 1" HIGH ON CONTRASTING BACKGROUND. - THE USE OF LOCKING DEVICE IS REVOCABLE BY BUILDING OFFICIAL FOR DUE CAUSE. IN THAT CASE, INSTALL PANIC HARDWARE.
2	PRIVACY LOCK FROM INSIDE THE RESTROOM
3	LOCK FROM OUTSIDE THE ROOM

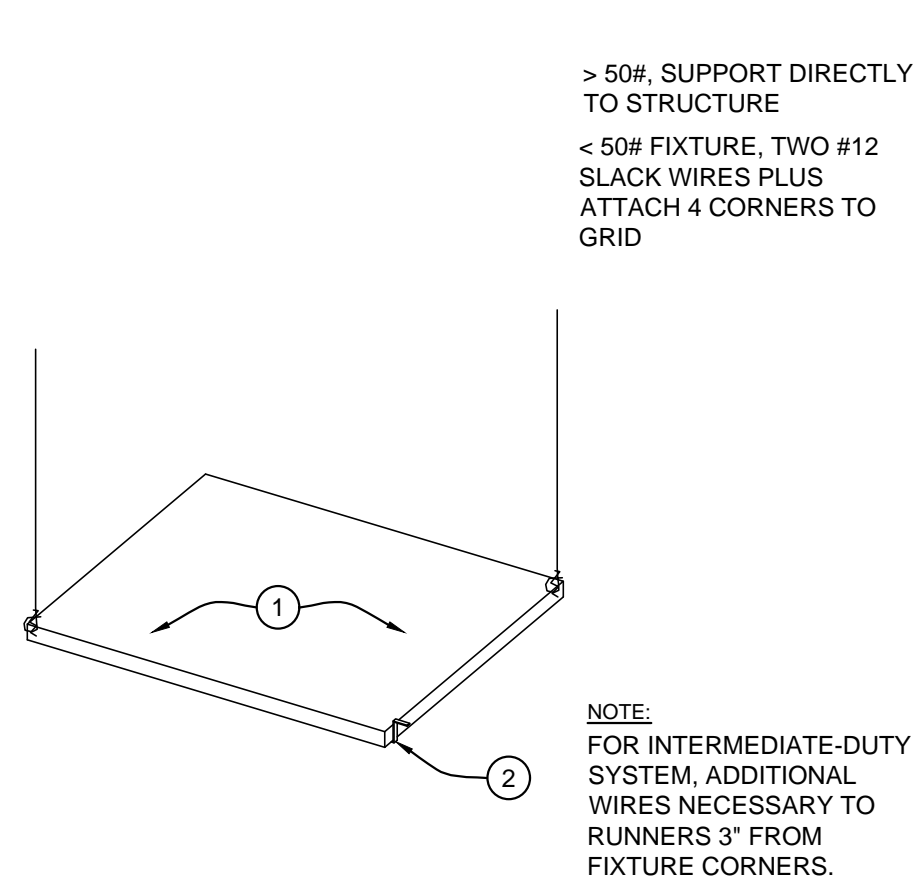
Door and Window Schedule
Door/Window Details
Room Finish Schedule

AS NOTES

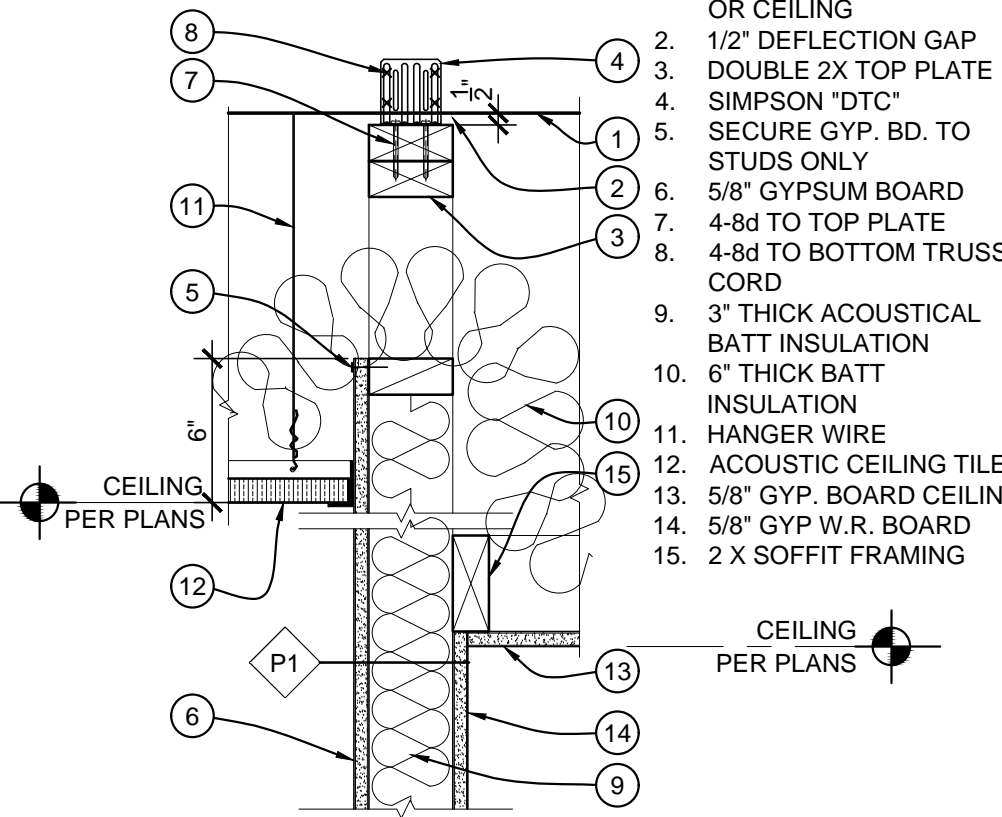


NOTE:
 1. LOCATE SWITCH PLATES, ELECTRICAL AND TELEPHONE WALL OUTLETS AT THE NEAREST STUD FROM THE SCALED LOCATION ON PLAN, UNLESS SPECIFICALLY DIMENSIONED ON PLAN, ELEVATION OR LOCATED PER DIAGRAM ABOVE.
 2. CENTER FIRE ALARM STROBES DIRECTLY ABOVE FIRE EXTINGUISHER CABINETS WHERE BOTH OCCUR.

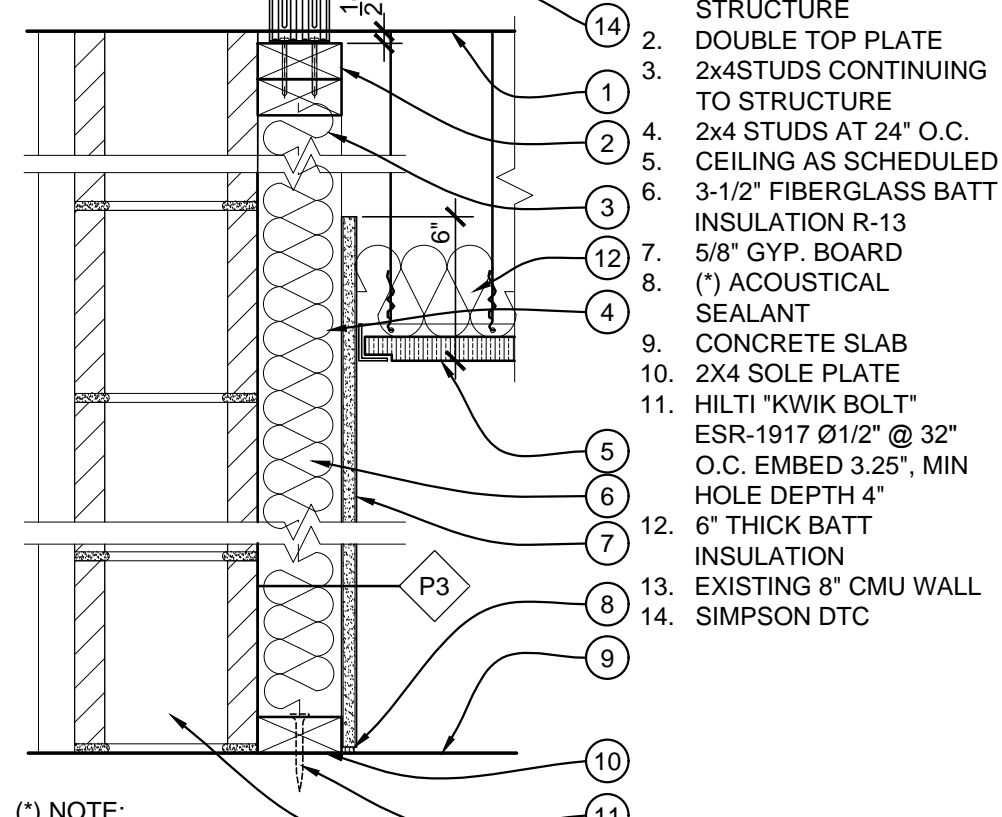
12 GENERAL DEVICE ALIGNMENT
 SCALE: 3/4"=1'-0" w001-01



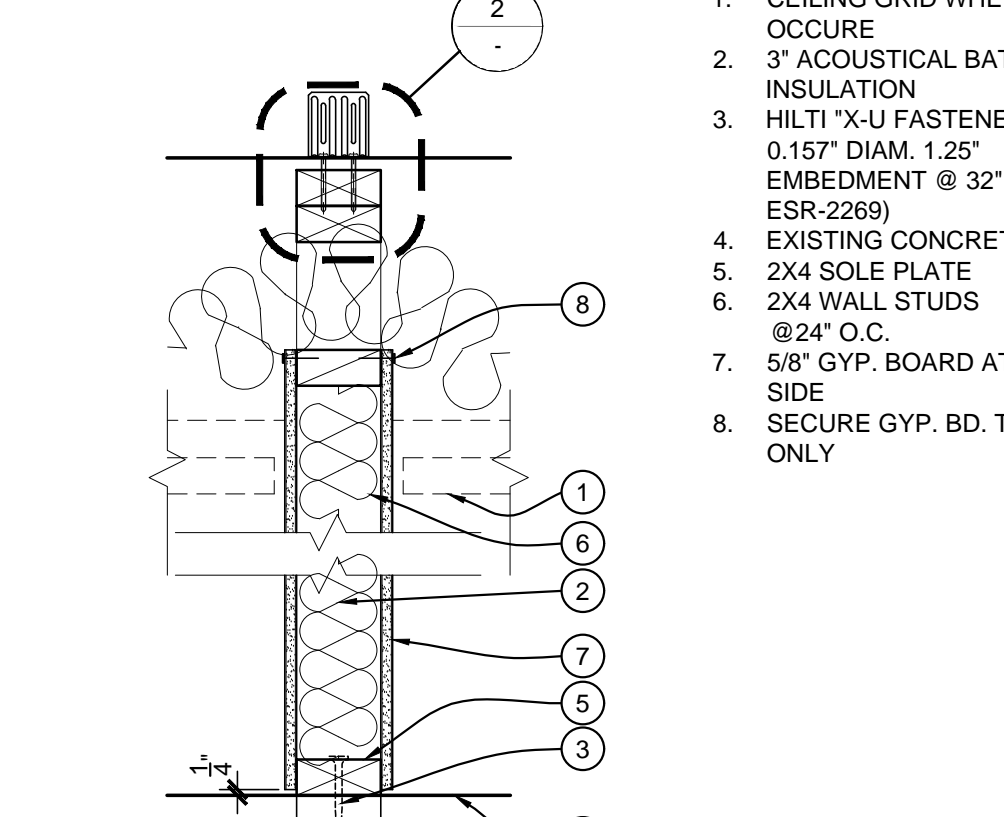
9 LIGHT FIXTURE SUPPORT
 SCALE: 1-1/2"=1'-0"



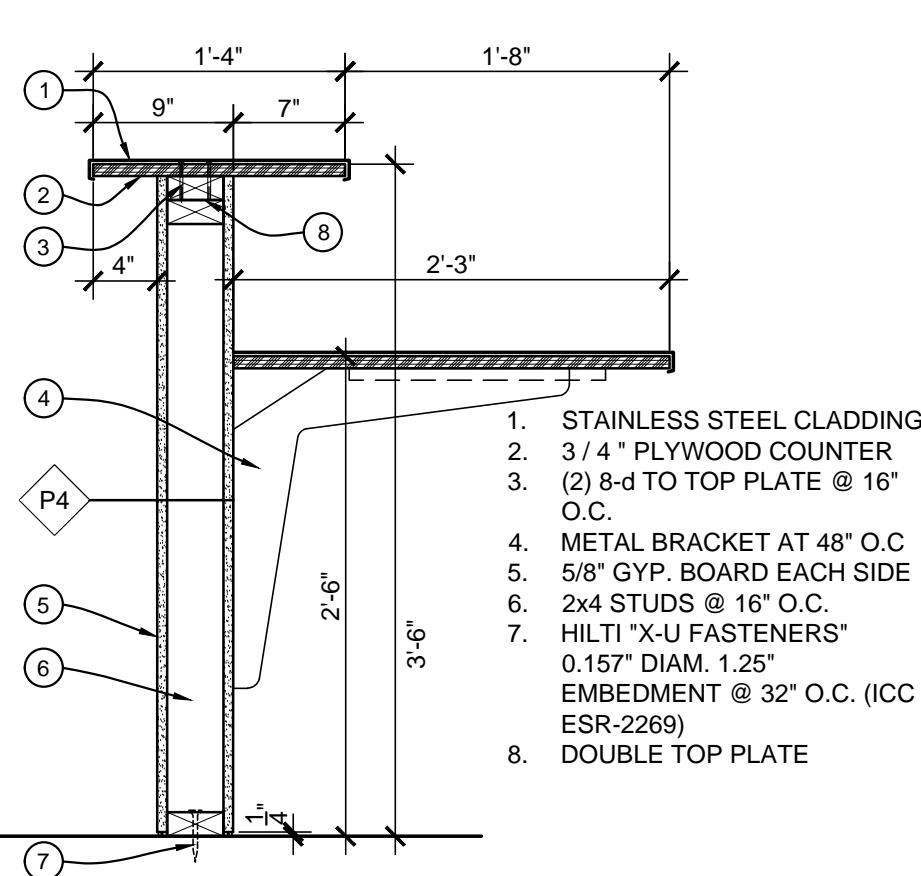
5 CEILING TO PARTITION WALL
 SCALE: 1-1/2"=1'-0"



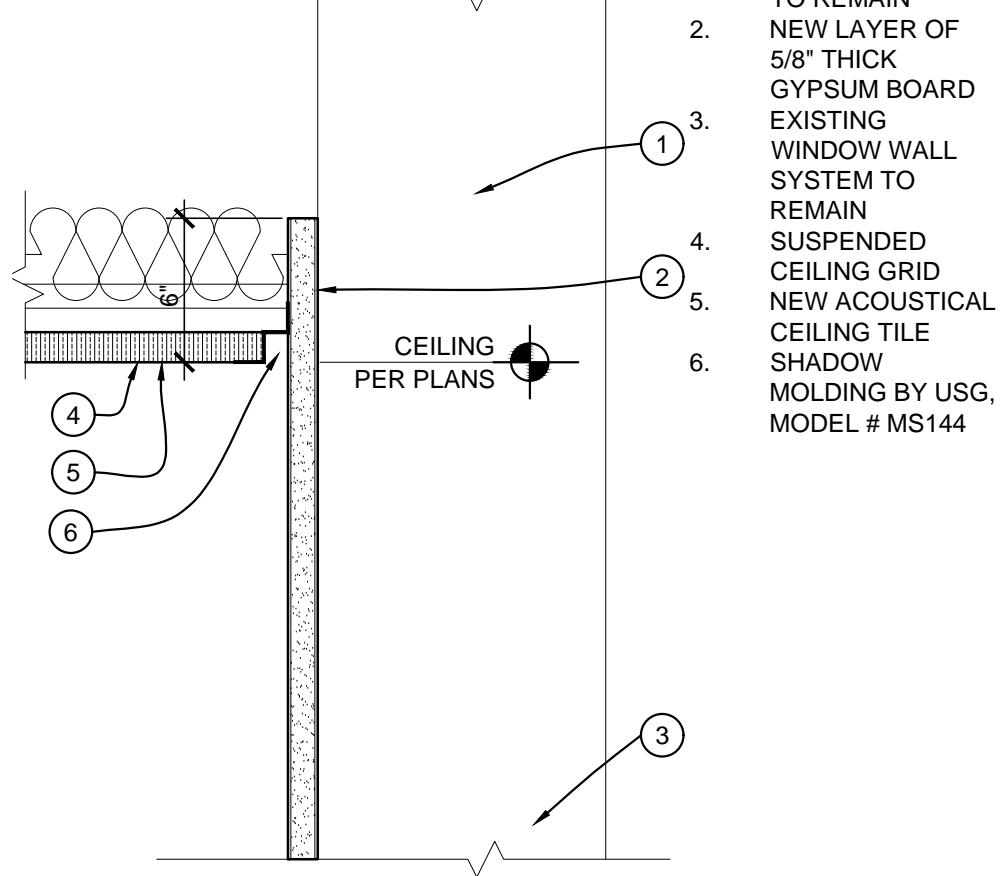
1 ACOUSTICAL CEILING TO EXISTING WALL
 SCALE: 1-1/2"=1'-0"



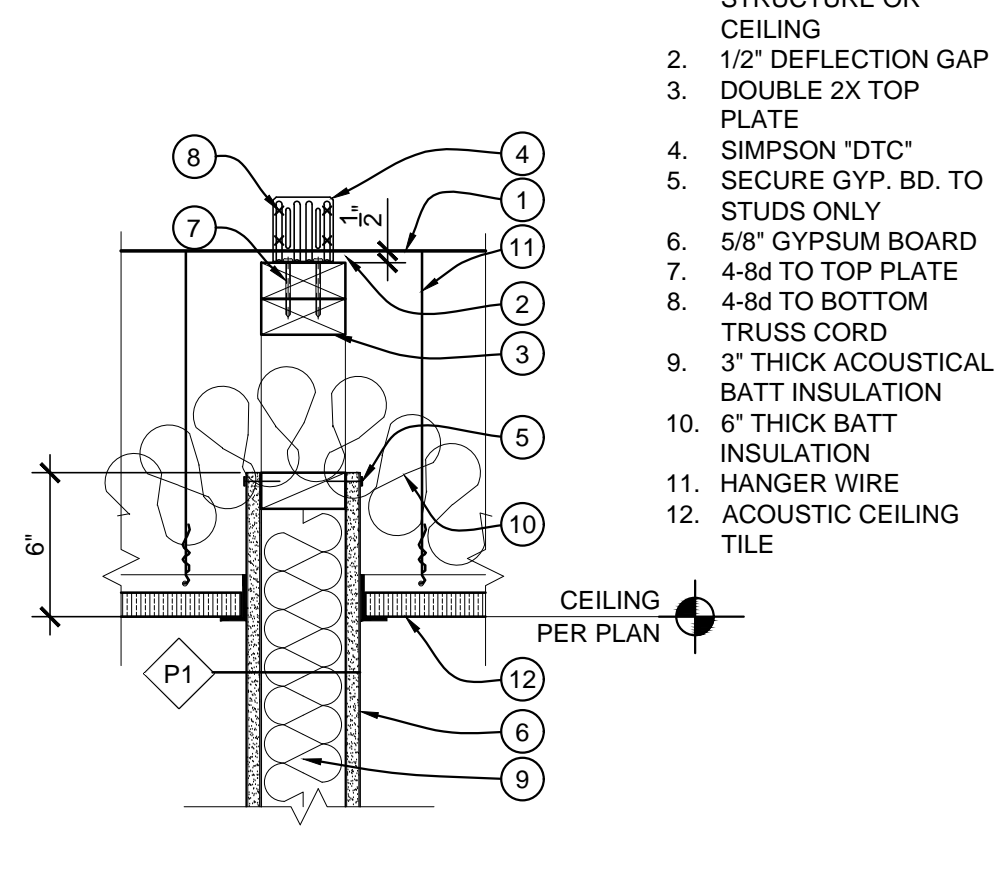
P1 PARTITION TYPE \"P1\"
 SCALE: 1-1/2"=1'-0" C1010-600



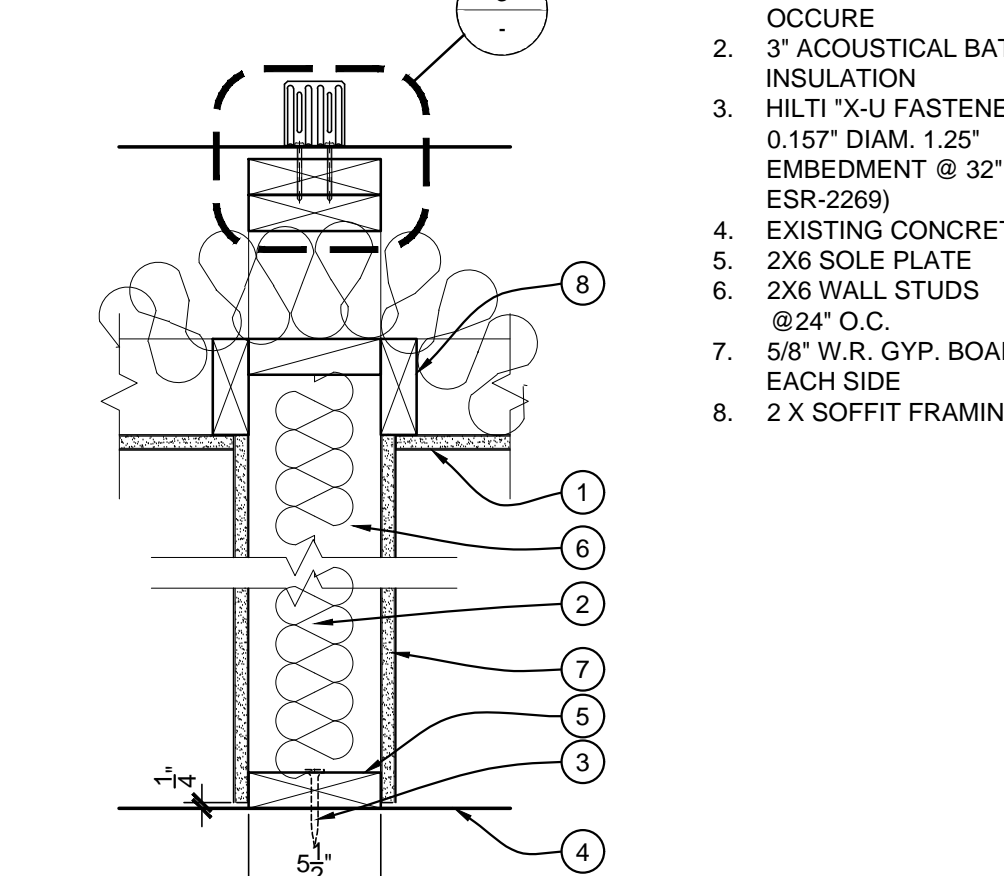
10 SECTION @ COUNTER
 SCALE: 1"=1'-0"



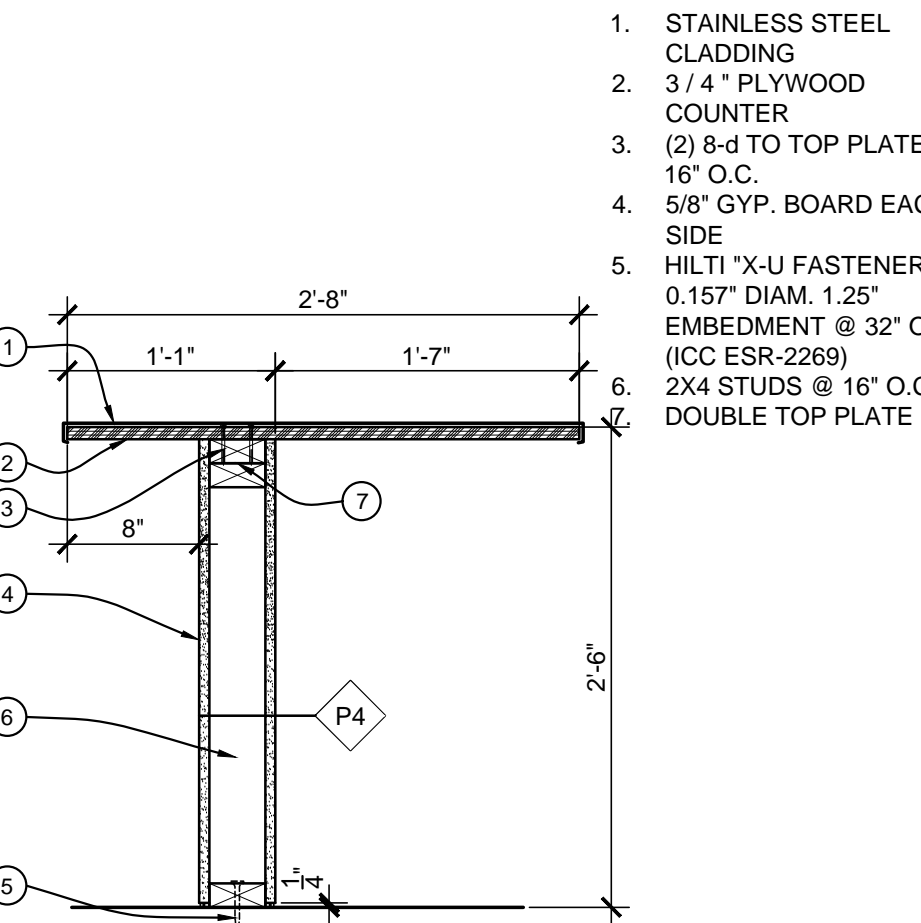
6 ACOUSTICAL CEILING TO EXISTING WALL
 SCALE: 1-1/2"=1'-0"



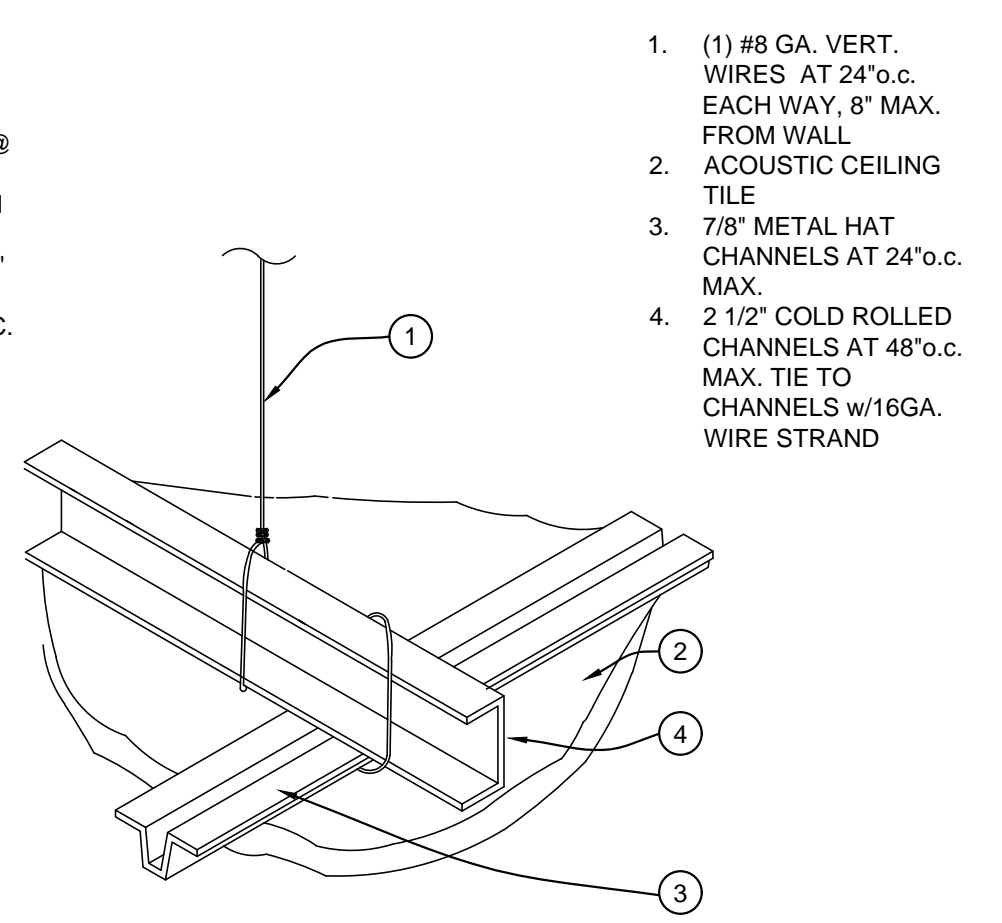
2 CEILING TO PARTITION WALL
 SCALE: 1-1/2"=1'-0"



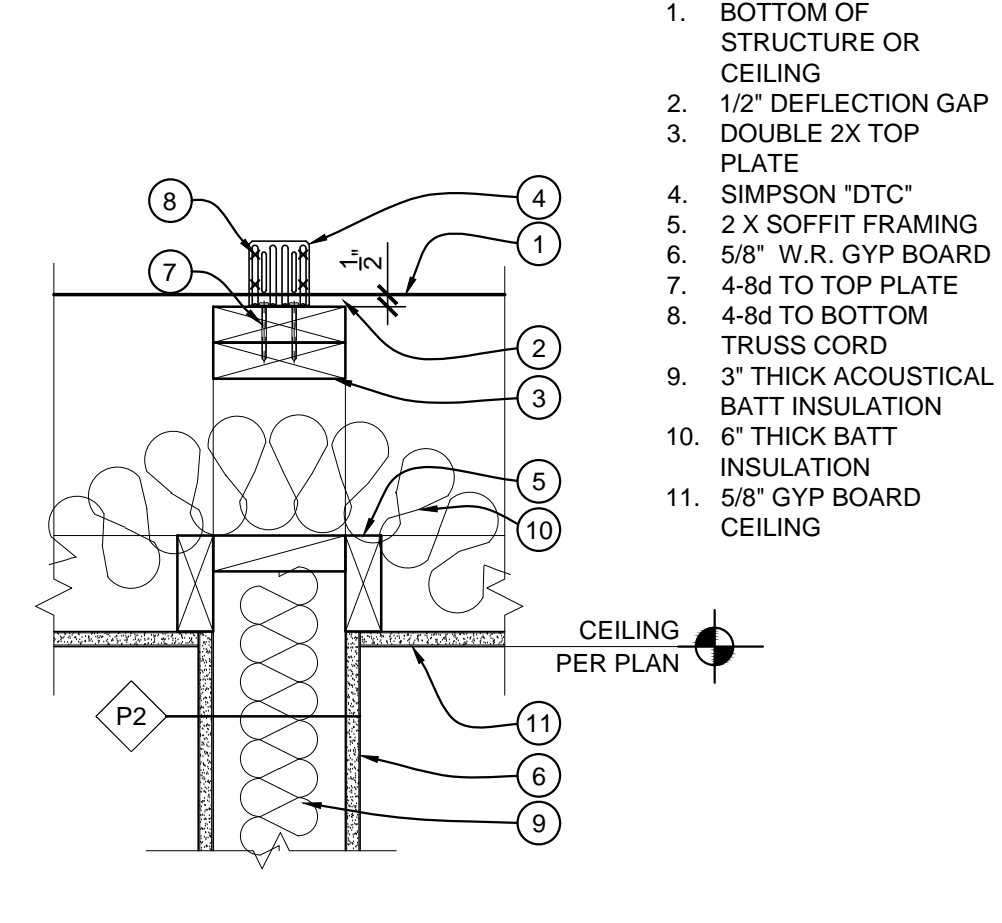
P2 PARTITION TYPE \"P2\"
 SCALE: 1-1/2"=1'-0" C1010-600



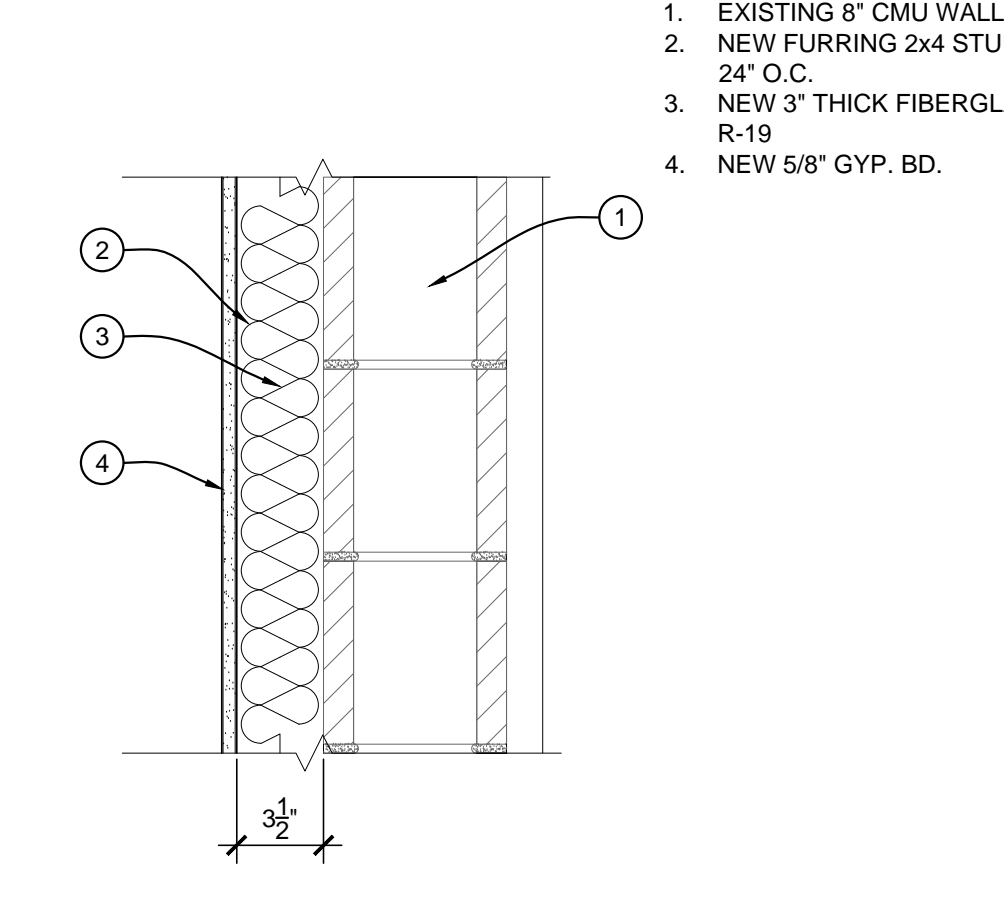
11 SECTION @ COUNTER
 SCALE: 1"=1'-0"



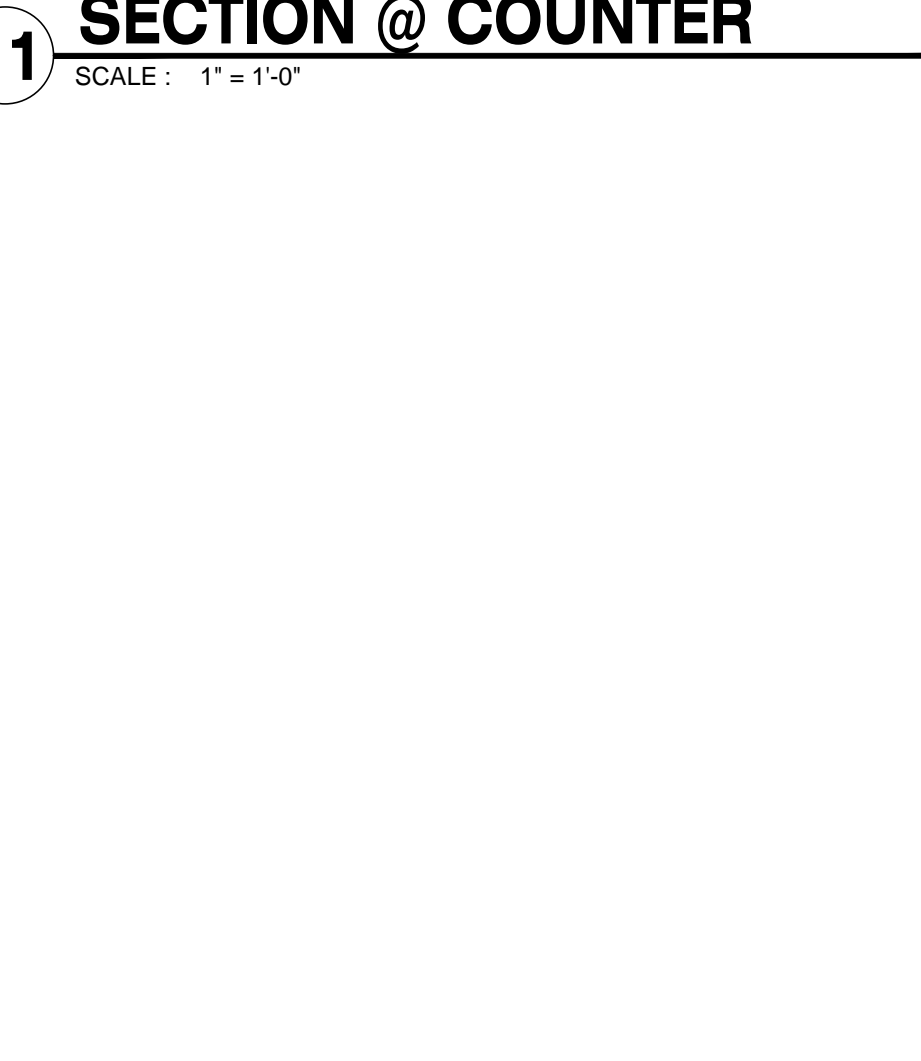
7 SUSPENDED ACOUSTIC CEILING
 SCALE: 1-1/2"=1'-0"



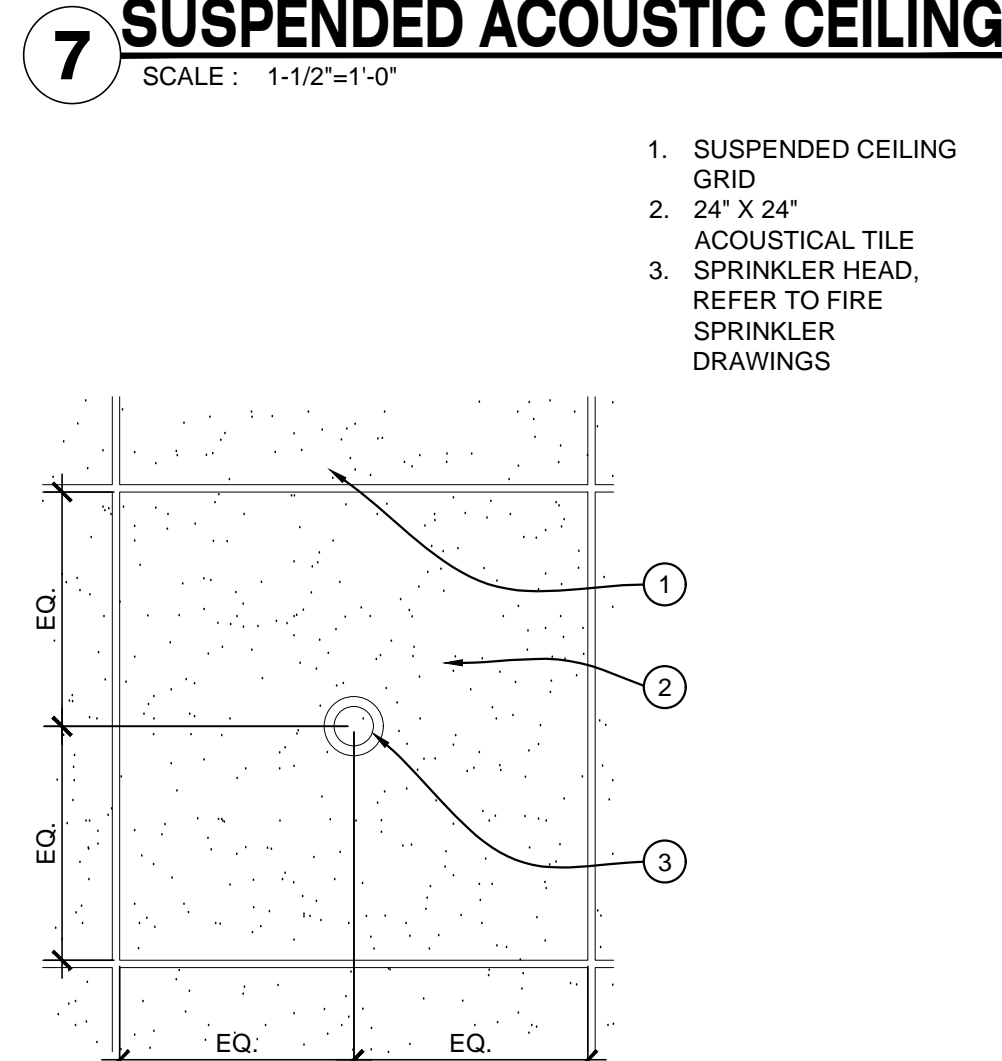
3 CEILING TO PARTITION WALL
 SCALE: 3"=1'-0"



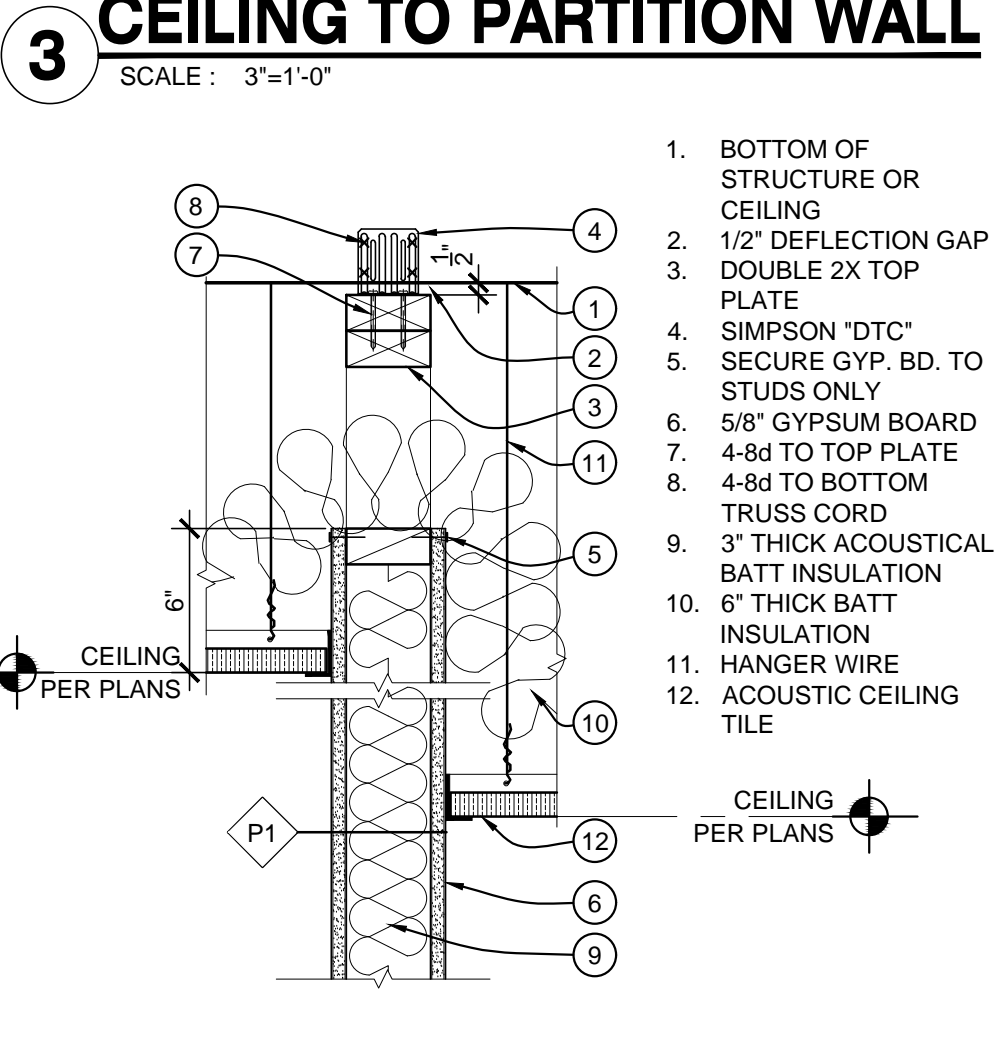
P3 PARTITION TYPE \"P3\"
 SCALE: 1-1/2"=1'-0" C1010-600



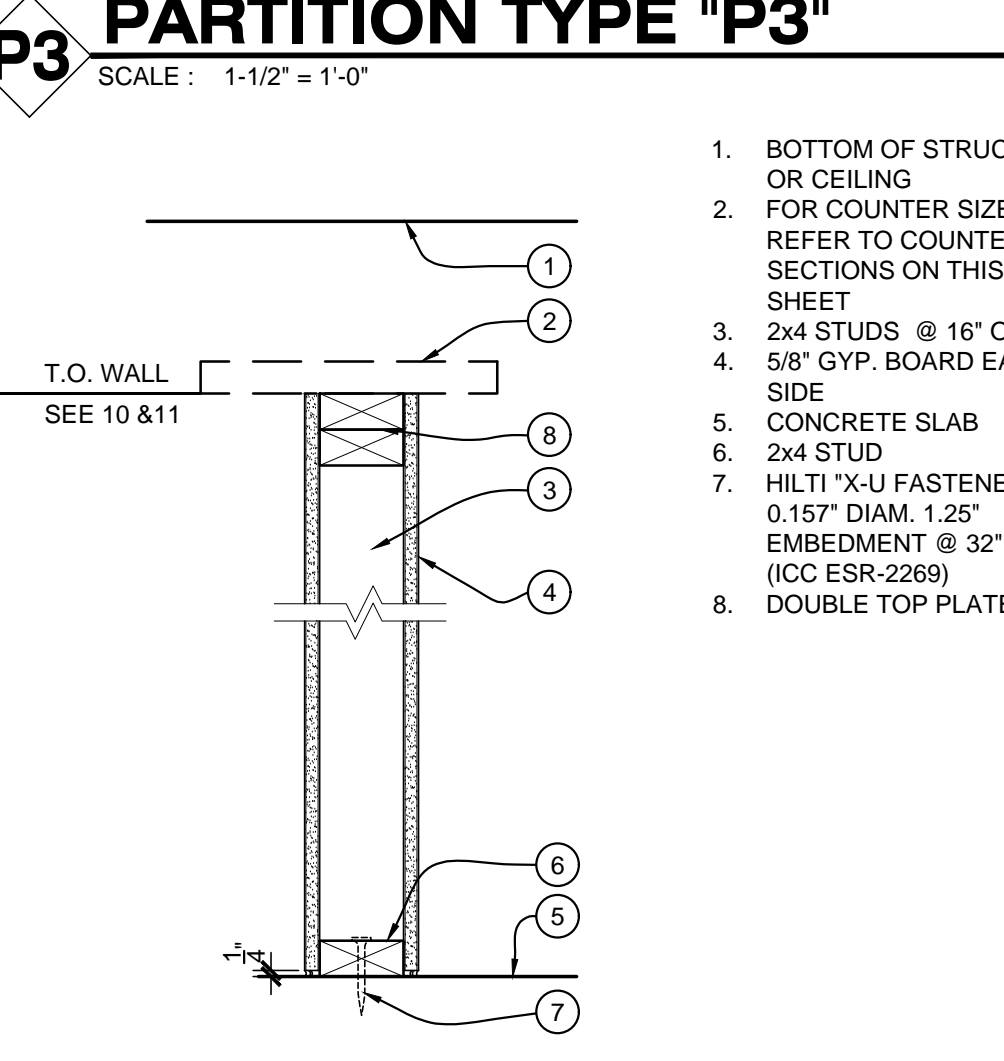
8 SPRINKLER HEAD DETAIL
 SCALE: 1-1/2"=1'-0"



4 CEILING TO PARTITION WALL
 SCALE: 1-1/2"=1'-0"



P4 PONY WALL
 SCALE: 1-1/2"=1'-0"



P4 PONY WALL
 SCALE: 1-1/2"=1'-0"

Rev.	Date	Submittal
1	02-09-2015	1st Plan Review
	03-16-2015	2nd Plan Review

Hair Salon
 Tenant Improvement

Hair Salon
 Tenant Improvement

Hair Salon
 Tenant Improvement

Details

Date:	03-16-2015
Project No.	0415
Drawn By:	ED
Checked By:	ED
Approved By:	ED

Scale: AS NOTED

D-1